

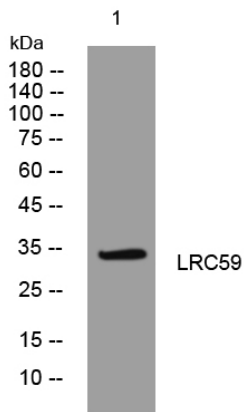


## LRC59 rabbit pAb

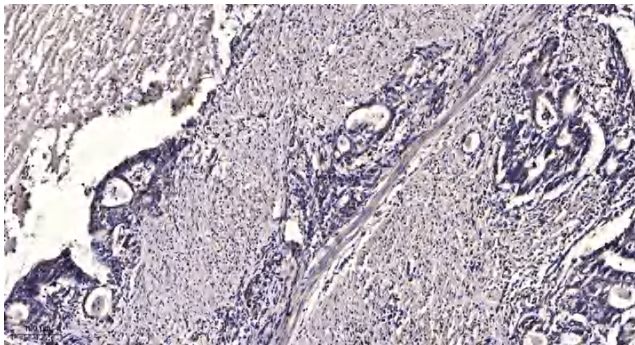
<b>Catalog No</b>	YP-Ab-11519
<b>Isotype</b>	IgG
<b>Reactivity</b>	Human; Mouse;Rat
<b>Applications</b>	WB;IHC
<b>Gene Name</b>	LRRC59 PRO1855
<b>Protein Name</b>	LRC59
<b>Immunogen</b>	Synthesized peptide derived from human LRC59 AA range: 110-160
<b>Specificity</b>	This antibody detects endogenous levels of LRC59 at Human/Mouse/Rat
<b>Formulation</b>	Liquid in PBS containing 50% glycerol, 0.5% BSA and 0.02% sodium azide.
<b>Source</b>	Polyclonal, Rabbit,IgG
<b>Purification</b>	The antibody was affinity-purified from rabbit serum by affinity-chromatography using specific immunogen.
<b>Dilution</b>	WB 1:500-2000;IHC-p 1:50-300
<b>Concentration</b>	1 mg/ml
<b>Purity</b>	≥90%
<b>Storage Stability</b>	-20°C/1 year
<b>Synonyms</b>	
<b>Observed Band</b>	
<b>Cell Pathway</b>	Microsome membrane ; Single-pass type II membrane protein . Endoplasmic reticulum membrane; Single-pass type II membrane protein. Nucleus envelope. Localization in the nuclear envelope depends upon the nuclear import machinery, including KPNB1.
<b>Tissue Specificity</b>	Widely expressed.
<b>Function</b>	similarity:Contains 5 LRR (leucine-rich) repeats.,subunit:Interacts with SGOL1.,
<b>Background</b>	
<b>matters needing attention</b>	Avoid repeated freezing and thawing!
<b>Usage suggestions</b>	This product can be used in immunological reaction related experiments. For more information, please consult technical personnel.



## Products Images



Western blot analysis of lysates from U2OS cells, primary antibody was diluted at 1:1000, 4° over night



Immunohistochemical analysis of paraffin-embedded human Gastric adenocarcinoma. 1, Antibody was diluted at 1:200(4° overnight). 2, Tris-EDTA,pH9.0 was used for antigen retrieval. 3,Secondary antibody was diluted at 1:200(room temperature, 45min).