



## NKD2 rabbit pAb

<b>Catalog No</b>	YP-Ab-11539
<b>Isotype</b>	IgG
<b>Reactivity</b>	Human; Mouse
<b>Applications</b>	WB
<b>Gene Name</b>	NKD2
<b>Protein Name</b>	NKD2
<b>Immunogen</b>	Synthesized peptide derived from human NKD2 AA range: 311-361
<b>Specificity</b>	This antibody detects endogenous levels of NKD2 at Human/Mouse
<b>Formulation</b>	Liquid in PBS containing 50% glycerol, 0.5% BSA and 0.02% sodium azide.
<b>Source</b>	Polyclonal, Rabbit,IgG
<b>Purification</b>	The antibody was affinity-purified from rabbit serum by affinity-chromatography using specific immunogen.
<b>Dilution</b>	WB 1: 500-2000
<b>Concentration</b>	1 mg/ml
<b>Purity</b>	≥90%
<b>Storage Stability</b>	-20°C/1 year
<b>Synonyms</b>	
<b>Observed Band</b>	
<b>Cell Pathway</b>	Cell membrane . Cytoplasm . Cytoplasmic vesicle .
<b>Tissue Specificity</b>	Expressed in kidney, lung, pancreas and spleen.
<b>Function</b>	developmental stage:Expressed in fetal kidney and lung.,function:Cell autonomous antagonist of the canonical Wnt signaling pathway. May activate a second Wnt signaling pathway that controls planar cell polarity (By similarity). Required for processing of TGFA and for targeting of TGFA to the basolateral membrane of polarized epithelial cells.,similarity:Belongs to the NKD family.,similarity:Contains 1 EF-hand domain.,subunit:Interacts with DVL1, DVL2, DVL3 and PPP2R3A (By similarity). Interacts with TGFA.,tissue specificity:Expressed in kidney, lung, pancreas and spleen.,
<b>Background</b>	This gene encodes a member of a family of proteins that function as negative regulators of Wnt receptor signaling through interaction with Dishevelled family members. The encoded protein participates in the delivery of transforming growth factor alpha-containing vesicles to the cell membrane. Alternatively spliced transcript variants encoding multiple isoforms have been observed for this gene. [provided by RefSeq, Aug 2012],



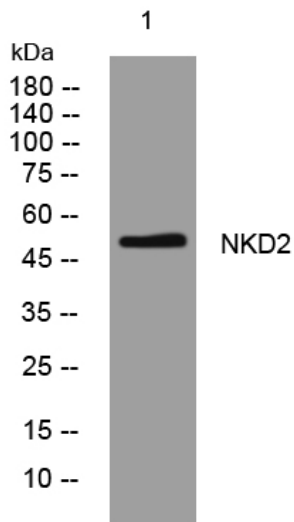
**matters needing attention**

Avoid repeated freezing and thawing!

**Usage suggestions**

This product can be used in immunological reaction related experiments. For more information, please consult technical personnel.

**Products Images**



Western blot analysis of lysates from SW480 cells, primary antibody was diluted at 1:1000, 4° over night