



NEDD4 rabbit pAb

Catalog No	YP-Ab-11562
Isotype	IgG
Reactivity	Human; Mouse;Rat
Applications	WB
Gene Name	NEDD4 KIAA0093 NEDD4-1 PIG53
Protein Name	NEDD4
Immunogen	Synthesized peptide derived from human NEDD4 AA range: 80-130
Specificity	This antibody detects endogenous levels of NEDD4 at Human/Mouse/Rat
Formulation	Liquid in PBS containing 50% glycerol, 0.5% BSA and 0.02% sodium azide.
Source	Polyclonal, Rabbit,IgG
Purification	The antibody was affinity-purified from rabbit serum by affinity-chromatography using specific immunogen.
Dilution	WB 1: 500-2000
Concentration	1 mg/ml
Purity	≥90%
Storage Stability	-20°C/1 year
Synonyms	
Observed Band	
Cell Pathway	Cytoplasm . Cell membrane ; Peripheral membrane protein . Recruited to the plasma membrane by GRB10. Once complexed with GRB10 and IGF1R, follows IGF1R internalization, remaining associated with early endosomes. Uncouples from IGF1R-containing endosomes before the sorting of the receptor to the lysosomal compartment (By similarity). May be recruited to exosomes by NDFIP1.
Tissue Specificity	
Function	domain:The WW domains mediate interaction with LITAF, RNF11, WBP1, WBP2, TMEPAI, NDFIP1 and PRRG2.,function:E3 ubiquitin-protein ligase which accepts ubiquitin from an E2 ubiquitin-conjugating enzyme in the form of a thioester and then directly transfers the ubiquitin to targeted substrates (By similarity). Involved in the budding of many viruses.,miscellaneous:A cysteine residue is required for ubiquitin-thioester formation.,pathway:Protein modification; protein ubiquitination.,similarity:Contains 1 C2 domain.,similarity:Contains 1 HECT (E6AP-type E3 ubiquitin-protein ligase) domain.,similarity:Contains 4 WW domains.,subunit:Interacts with UBE2D2. Binds SCNN1A, SCNN1B and SCNN1G. Binds, in vitro, through the WW2 and WW3 domains, to neural isoforms of ENAH that contain the PPSY motif. Interacts with LITAF, RNF11, WBP1, WBP2, TMEPAI, NDFIP1 and PRRG2 (By similarity). Interacts with viral

**Background**

This gene is the founding member of the NEDD4 family of HECT ubiquitin ligases that function in the ubiquitin proteasome system of protein degradation. The encoded protein contains an N-terminal calcium and phospholipid binding C2 domain followed by multiple tryptophan-rich WW domains and, a C-terminal HECT ubiquitin ligase catalytic domain. It plays critical role in the regulation of a number of membrane receptors, endocytic machinery components and the tumor suppressor PTEN. [provided by RefSeq, Jul 2016],

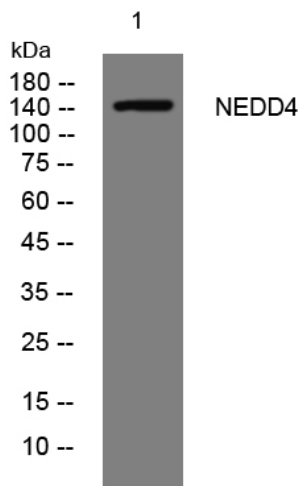
matters needing attention

Avoid repeated freezing and thawing!

Usage suggestions

This product can be used in immunological reaction related experiments. For more information, please consult technical personnel.

Products Images



Western blot analysis of lysates from CACO2 cells, primary antibody was diluted at 1:1000, 4° over night