



# TXND8 rabbit pAb

<b>Catalog No</b>	YP-Ab-11587
<b>Isotype</b>	IgG
<b>Reactivity</b>	Human; Mouse;Rat
<b>Applications</b>	WB
<b>Gene Name</b>	TXNDC8 SPTRX3 TRX6
<b>Protein Name</b>	TXND8
<b>Immunogen</b>	Synthesized peptide derived from human TXND8 AA range: 64-114
<b>Specificity</b>	This antibody detects endogenous levels of TXND8 at Human/Mouse/Rat
<b>Formulation</b>	Liquid in PBS containing 50% glycerol, 0.5% BSA and 0.02% sodium azide.
<b>Source</b>	Polyclonal, Rabbit,IgG
<b>Purification</b>	The antibody was affinity-purified from rabbit serum by affinity-chromatography using specific immunogen.
<b>Dilution</b>	WB 1: 500-2000
<b>Concentration</b>	1 mg/ml
<b>Purity</b>	≥90%
<b>Storage Stability</b>	-20°C/1 year
<b>Synonyms</b>	
<b>Observed Band</b>	
<b>Cell Pathway</b>	Cytoplasm . Golgi apparatus .
<b>Tissue Specificity</b>	Testis-specific. Only expressed during spermiogenesis, prominently in the Golgi apparatus of pachytene spermatocytes and round and elongated spermatids, with a transient localization in the developing acrosome of round spermatids (at protein level).
<b>Function</b>	function:May be required for post-translational modifications of proteins required for acrosomal biogenesis. May act by reducing disulfide bonds within the sperm.,miscellaneous:Increased levels, possibly caused by overexpression, are observed in morphologically abnormal spermatozoa from infertile men, suggesting that it may be used as a marker of aberrant spermatogenesis.,similarity:Belongs to the thioredoxin family.,similarity:Contains 1 thioredoxin domain.,tissue specificity:Testis-specific. Only expressed during spermiogenesis, prominently in the Golgi apparatus of pachytene spermatocytes and round and elongated spermatids, with a transient localization in the developing acrosome of round spermatids (at protein level).,
<b>Background</b>	



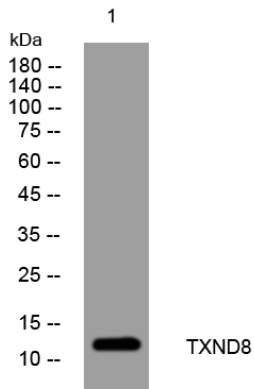
**matters needing attention**

Avoid repeated freezing and thawing!

**Usage suggestions**

This product can be used in immunological reaction related experiments. For more information, please consult technical personnel.

**Products Images**



Western blot analysis of lysates from Jarkat cells, primary antibody was diluted at 1:1000, 4°over night