

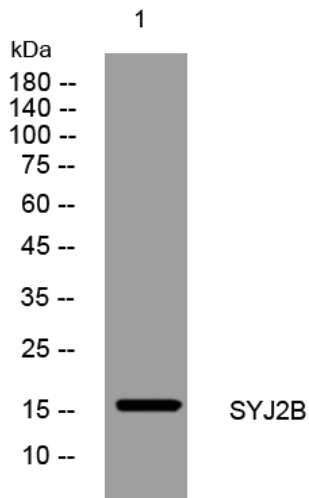


SYJ2B rabbit pAb

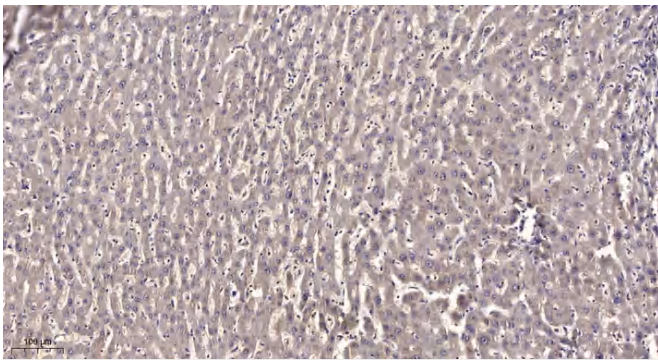
Catalog No	YP-Ab-11620
Isotype	IgG
Reactivity	Human; Mouse;Rat
Applications	WB;IHC
Gene Name	SYNJ2BP OMP25
Protein Name	SYJ2B
Immunogen	Synthesized peptide derived from human SYJ2B AA range: 83-133
Specificity	This antibody detects endogenous levels of SYJ2B at Human/Mouse/Rat
Formulation	Liquid in PBS containing 50% glycerol, 0.5% BSA and 0.02% sodium azide.
Source	Polyclonal, Rabbit,IgG
Purification	The antibody was affinity-purified from rabbit serum by affinity-chromatography using specific immunogen.
Dilution	WB 1:500-2000;IHC-p 1:50-300
Concentration	1 mg/ml
Purity	≥90%
Storage Stability	-20°C/1 year
Synonyms	
Observed Band	
Cell Pathway	Mitochondrion outer membrane .
Tissue Specificity	
Function	similarity:Contains 1 PDZ (DHR) domain.,subunit:Binds (via the PDZ domain) to isoform 2A of SYNJ2 (via the unique motif in the C-terminus).,
Background	
matters needing attention	Avoid repeated freezing and thawing!
Usage suggestions	This product can be used in immunological reaction related experiments. For more information, please consult technical personnel.



Products Images



Western blot analysis of lysates from A549 cells, primary antibody was diluted at 1:1000, 4° over night



Immunohistochemical analysis of paraffin-embedded human liver cancer. 1, Antibody was diluted at 1:200(4° overnight). 2, Tris-EDTA,pH9.0 was used for antigen retrieval. 3,Secondary antibody was diluted at 1:200(room temperature, 45min).