

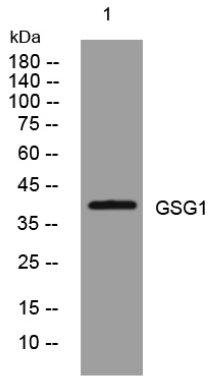


GSG1 rabbit pAb

Catalog No	YP-Ab-11628
Isotype	IgG
Reactivity	Human; Mouse;Rat
Applications	WB
Gene Name	GSG1 UNQ709/PRO1360
Protein Name	GSG1
Immunogen	Synthesized peptide derived from human GSG1 AA range: 24-74
Specificity	This antibody detects endogenous levels of GSG1 at Human/Mouse/Rat
Formulation	Liquid in PBS containing 50% glycerol, 0.5% BSA and 0.02% sodium azide.
Source	Polyclonal, Rabbit,IgG
Purification	The antibody was affinity-purified from rabbit serum by affinity-chromatography using specific immunogen.
Dilution	WB 1: 500-2000
Concentration	1 mg/ml
Purity	≥90%
Storage Stability	-20°C/1 year
Synonyms	
Observed Band	
Cell Pathway	Endoplasmic reticulum membrane ; Multi-pass membrane protein . Colocalizes with PAPOLB in the endoplasmic reticulum. .
Tissue Specificity	
Function	function:May cause the redistribution of PAPOLB from the cytosol to the endoplasmic reticulum.,similarity:Belongs to the GSG1 family.,subcellular location:Colocalizes with PAPOLB in the endoplasmic reticulum.,subunit:Interacts with PAPOLB.,
Background	
matters needing attention	Avoid repeated freezing and thawing!
Usage suggestions	This product can be used in immunological reaction related experiments. For more information, please consult technical personnel.



Products Images



Western blot analysis of lysates from A431 cells,
primary antibody was diluted at 1:1000, 4° over night