

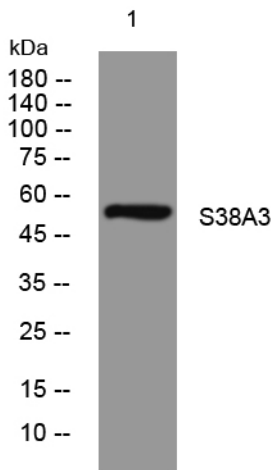


## S38A3 rabbit pAb

<b>Catalog No</b>	YP-Ab-11633
<b>Isotype</b>	IgG
<b>Reactivity</b>	Human; Mouse;Rat
<b>Applications</b>	WB
<b>Gene Name</b>	SLC38A3 G17 NAT1 SN1 SNAT3
<b>Protein Name</b>	S38A3
<b>Immunogen</b>	Synthesized peptide derived from human S38A3 AA range: 128-178
<b>Specificity</b>	This antibody detects endogenous levels of S38A3 at Human/Mouse/Rat
<b>Formulation</b>	Liquid in PBS containing 50% glycerol, 0.5% BSA and 0.02% sodium azide.
<b>Source</b>	Polyclonal, Rabbit,IgG
<b>Purification</b>	The antibody was affinity-purified from rabbit serum by affinity-chromatography using specific immunogen.
<b>Dilution</b>	WB 1: 500-2000
<b>Concentration</b>	1 mg/ml
<b>Purity</b>	≥90%
<b>Storage Stability</b>	-20°C/1 year
<b>Synonyms</b>	
<b>Observed Band</b>	
<b>Cell Pathway</b>	Cell membrane ; Multi-pass membrane protein .
<b>Tissue Specificity</b>	
<b>Function</b>	function:Sodium-dependent amino acid/proton antiporter. Mediates electrogenic cotransport of glutamine and sodium ions in exchange for protons. Also recognizes histidine, asparagine and alanine. May mediate amino acid transport in either direction under physiological conditions. May play a role in nitrogen metabolism and synaptic transmission.,similarity:Belongs to the amino acid/polyamine transporter 2 family.,
<b>Background</b>	
<b>matters needing attention</b>	Avoid repeated freezing and thawing!
<b>Usage suggestions</b>	This product can be used in immunological reaction related experiments. For more information, please consult technical personnel.



## Products Images



Western blot analysis of lysates from A549 cells,  
primary antibody was diluted at 1:1000, 4° over night