



## NPS3A rabbit pAb

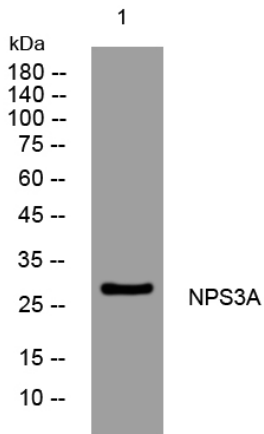
<b>Catalog No</b>	YP-Ab-11635
<b>Isotype</b>	IgG
<b>Reactivity</b>	Human;Rat;Mouse;
<b>Applications</b>	WB
<b>Gene Name</b>	NIPSNAP3A NIPSNAP4 HSPC299
<b>Protein Name</b>	NPS3A
<b>Immunogen</b>	Synthesized peptide derived from human NPS3A AA range: 66-116
<b>Specificity</b>	This antibody detects endogenous levels of NPS3A at Human
<b>Formulation</b>	Liquid in PBS containing 50% glycerol, 0.5% BSA and 0.02% sodium azide.
<b>Source</b>	Polyclonal, Rabbit,IgG
<b>Purification</b>	The antibody was affinity-purified from rabbit serum by affinity-chromatography using specific immunogen.
<b>Dilution</b>	WB 1: 500-2000
<b>Concentration</b>	1 mg/ml
<b>Purity</b>	≥90%
<b>Storage Stability</b>	-20°C/1 year
<b>Synonyms</b>	
<b>Observed Band</b>	
<b>Cell Pathway</b>	Cytoplasm, cytosol . May be part of some vesicular structure distinct from lysosomal vesicles.
<b>Tissue Specificity</b>	Ubiquitous. Highly expressed in liver, kidney and muscle. Expressed at intermediate level in brain, heart, colon, thymus, kidney, small intestine, placenta, lung, leukocytes and spleen.
<b>Function</b>	similarity:Belongs to the NipSnap family.,subcellular location:May be part of some vesicular structure distinct from lysosomal vesicles.,subunit:Interacts with the Salmonella typhimurium virulence protein spiC.,tissue specificity:Ubiquitous. Highly expressed in liver, kidney and muscle. Expressed at intermediate level in brain, heart, colon, thymus, kidney, small intestine, placenta, lung, leukocytes and spleen.,
<b>Background</b>	NIPSNAP3A belongs to a family of proteins with putative roles in vesicular transport (Buechler et al., 2004 [PubMed 15177564]).[supplied by OMIM, Mar 2008],
<b>matters needing attention</b>	Avoid repeated freezing and thawing!



### Usage suggestions

This product can be used in immunological reaction related experiments. For more information, please consult technical personnel.

## Products Images



Western blot analysis of lysates from MCF-7 cells, primary antibody was diluted at 1:1000, 4° over night