



# SOX13 rabbit pAb

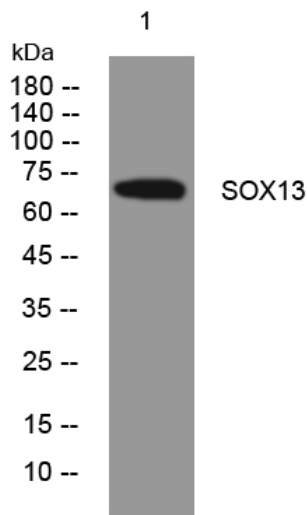
<b>Catalog No</b>	YP-Ab-11649
<b>Isotype</b>	IgG
<b>Reactivity</b>	Human; Mouse
<b>Applications</b>	WB;ELISA;IHC
<b>Gene Name</b>	SOX13
<b>Protein Name</b>	SOX13
<b>Immunogen</b>	Synthesized peptide derived from human SOX13 AA range: 561-611
<b>Specificity</b>	This antibody detects endogenous levels of SOX13 at Human/Mouse
<b>Formulation</b>	Liquid in PBS containing 50% glycerol, 0.5% BSA and 0.02% sodium azide.
<b>Source</b>	Polyclonal, Rabbit,IgG
<b>Purification</b>	The antibody was affinity-purified from rabbit serum by affinity-chromatography using specific immunogen.
<b>Dilution</b>	WB 1:500-2000;IHC-p 1:50-300; ELISA 2000-20000
<b>Concentration</b>	1 mg/ml
<b>Purity</b>	≥90%
<b>Storage Stability</b>	-20°C/1 year
<b>Synonyms</b>	
<b>Observed Band</b>	
<b>Cell Pathway</b>	Nucleus . Cytoplasm .
<b>Tissue Specificity</b>	Expressed in exocrine cells and islets of Langerhans in the pancreas (at protein level) (PubMed:10871192). Expressed in the pancreas, placenta, kidney, brain, heart, lung, and liver (PubMed:10871192, PubMed:20028982). Expressed in adipose tissue, cervix, colon, esophagus, ovary, prostate, small intestine, spleen, testicle, thymus and thyroid (PubMed:20028982).
<b>Function</b>	function:Binds to the sequence 5'-AACAAAT-3',.similarity:Contains 1 HMG box DNA-binding domain.,tissue specificity:Highly expressed in kidney, lung, and liver and low expression in thymus, brain, spleen, and muscle.,
<b>Background</b>	This gene encodes a member of the SOX (SRY-related HMG-box) family of transcription factors involved in the regulation of embryonic development and in the determination of cell fate. The encoded protein may act as a transcriptional regulator after forming a protein complex with other proteins. It has also been determined to be a type-1 diabetes autoantigen, also known as islet cell antibody 12. [provided by RefSeq, Jul 2008],
<b>matters needing attention</b>	Avoid repeated freezing and thawing!



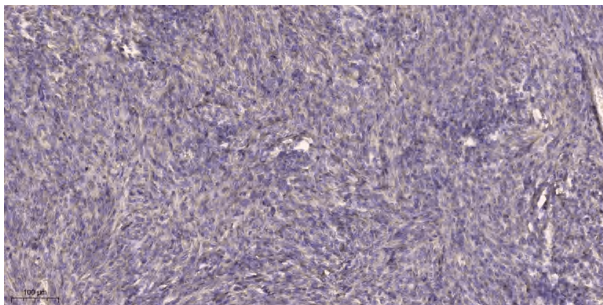
### Usage suggestions

This product can be used in immunological reaction related experiments. For more information, please consult technical personnel.

## Products Images



Western blot analysis of lysates from HEK293 cells, primary antibody was diluted at 1:1000, 4° over night



Immunohistochemical analysis of paraffin-embedded human Colon cancer. 1, Antibody was diluted at 1:200(4° overnight). 2, Tris-EDTA, pH9.0 was used for antigen retrieval. 3, Secondary antibody was diluted at 1:200(room temperature, 45min).