



# CHMP6 rabbit pAb

<b>Catalog No</b>	YP-Ab-11663
<b>Isotype</b>	IgG
<b>Reactivity</b>	Human; Mouse
<b>Applications</b>	WB
<b>Gene Name</b>	CHMP6 VPS20
<b>Protein Name</b>	CHMP6
<b>Immunogen</b>	Synthesized peptide derived from human CHMP6 AA range: 87-137
<b>Specificity</b>	This antibody detects endogenous levels of CHMP6 at Human/Mouse
<b>Formulation</b>	Liquid in PBS containing 50% glycerol, 0.5% BSA and 0.02% sodium azide.
<b>Source</b>	Polyclonal, Rabbit,IgG
<b>Purification</b>	The antibody was affinity-purified from rabbit serum by affinity-chromatography using specific immunogen.
<b>Dilution</b>	WB 1: 500-2000
<b>Concentration</b>	1 mg/ml
<b>Purity</b>	≥90%
<b>Storage Stability</b>	-20°C/1 year
<b>Synonyms</b>	
<b>Observed Band</b>	
<b>Cell Pathway</b>	Endomembrane system. Endosome membrane; Lipid-anchor. Late endosome membrane . Membrane ; Lipid-anchor . Localizes to endosomal membranes.
<b>Tissue Specificity</b>	Ubiquitously expressed.
<b>Function</b>	domain:The acidic C-terminus and the basic N-termminus are thought to render the protein in a closed, soluble and inactive conformation through an autoinhibitory intramolecular interaction. The open and active conformation, which enables membrane binding and oligomerization, is achieved by interaction with other cellular binding partners, probably including other ESCRT components.,function:Probable core component of the endosomal sorting required for transport complex III (ESCRT-III) which is involved in multivesicular bodies (MVBs) formation and sorting of endosomal cargo proteins into MVBs. MVBs contain intraluminal vesicles (ILVs) that are generated by invagination and scission from the limiting membrane of the endosome and mostly are delivered to lysosomes enabling degradation of membrane proteins, such as stimulated growth factor receptors, lysosomal enzymes and lipids. The MVB path
<b>Background</b>	This gene encodes a member of the chromatin-modifying protein/charged multivesicular body protein family. Proteins in this family are part of the ESCRT-III (endosomal sorting complex required for transport III) which degrades surface



receptors, and in biosynthesis of endosomes. [provided by RefSeq, Mar 2012],

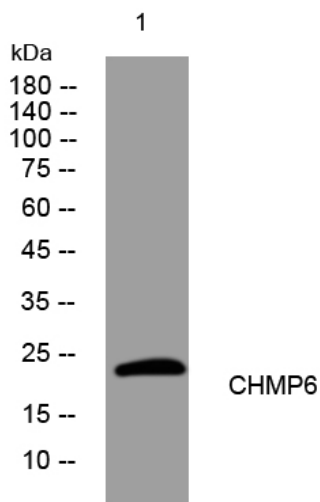
**matters needing attention**

Avoid repeated freezing and thawing!

**Usage suggestions**

This product can be used in immunological reaction related experiments. For more information, please consult technical personnel.

**Products Images**



Western blot analysis of lysates from THP-1 cells, primary antibody was diluted at 1:1000, 4° over night