

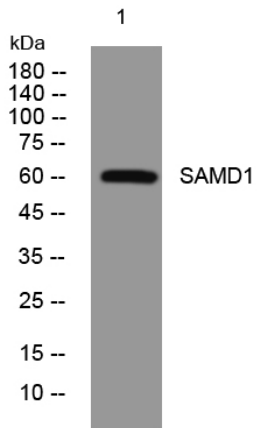


SAMD1 rabbit pAb

Catalog No	YP-Ab-11664
Isotype	IgG
Reactivity	Human; Mouse
Applications	WB
Gene Name	SAMD1
Protein Name	SAMD1
Immunogen	Synthesized peptide derived from human SAMD1 AA range: 418-468
Specificity	This antibody detects endogenous levels of SAMD1 at Human/Mouse
Formulation	Liquid in PBS containing 50% glycerol, 0.5% BSA and 0.02% sodium azide.
Source	Polyclonal, Rabbit,IgG
Purification	The antibody was affinity-purified from rabbit serum by affinity-chromatography using specific immunogen.
Dilution	WB 1: 500-2000
Concentration	1 mg/ml
Purity	≥90%
Storage Stability	-20°C/1 year
Synonyms	
Observed Band	
Cell Pathway	Nucleus . Chromosome . Secreted . In atherosclerotic lesions, it is found in the extracellular compartment and in foam cells cytoplasm. .
Tissue Specificity	Expressed in atherosclerotic lesions, not in normal intima. Expressed in foam cells.
Function	function:May play a role in atherogenesis by immobilizing LDL in the atherial wall.,similarity:Contains 1 SAM (sterile alpha motif) domain.,tissue specificity:Expressed in atherosclerotic lesions, not in normal intima.,
Background	
matters needing attention	Avoid repeated freezing and thawing!
Usage suggestions	This product can be used in immunological reaction related experiments. For more information, please consult technical personnel.



Products Images



Western blot analysis of lysates from 293T cells,
primary antibody was diluted at 1:1000, 4° over night