



XPO4 rabbit pAb

Catalog No	YP-Ab-11684
Isotype	IgG
Reactivity	Human; Mouse
Applications	WB
Gene Name	XPO4 KIAA1721
Protein Name	XPO4
Immunogen	Synthesized peptide derived from human XPO4 AA range: 244-294
Specificity	This antibody detects endogenous levels of XPO4 at Human/Mouse
Formulation	Liquid in PBS containing 50% glycerol, 0.5% BSA and 0.02% sodium azide.
Source	Polyclonal, Rabbit,IgG
Purification	The antibody was affinity-purified from rabbit serum by affinity-chromatography using specific immunogen.
Dilution	WB 1: 500-2000
Concentration	1 mg/ml
Purity	≥90%
Storage Stability	-20°C/1 year
Synonyms	
Observed Band	
Cell Pathway	Cytoplasm . Nucleus . Shuttles between the nucleus and the cytoplasm. .
Tissue Specificity	
Function	function:Mediates the nuclear export of proteins (cargos) with broad substrate specificity. In the nucleus binds cooperatively to its cargo and to the GTPase Ran in its active GTP-bound form. Docking of this trimeric complex to the nuclear pore complex (NPC) is mediated through binding to nucleoporins. Upon transit of a nuclear export complex into the cytoplasm, disassembling of the complex and hydrolysis of Ran-GTP to Ran-GDP (induced by RANBP1 and RANGAP1, respectively) cause release of the cargo from the export receptor. XPO4 then return to the nuclear compartment and mediate another round of transport. The directionality of nuclear export is thought to be conferred by an asymmetric distribution of the GTP- and GDP-bound forms of Ran between the cytoplasm and nucleus.,similarity:Belongs to the exportin family.,subcellular location:Shuttles between the nucleus and the cytoplasm.,subuni
Background	XPO4 belongs to a large family of karyopherins (see MIM 602738) that mediate the transport of proteins and other cargo between the nuclear and cytoplasmic compartments (Lipowsky et al., 2000 [PubMed 10944119]).[supplied by OMIM,



Mar 2009],

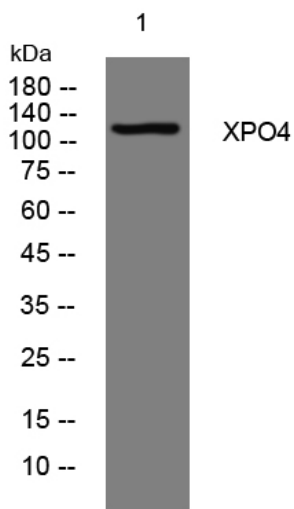
matters needing attention

Avoid repeated freezing and thawing!

Usage suggestions

This product can be used in immunological reaction related experiments. For more information, please consult technical personnel.

Products Images



Western blot analysis of lysates from Jarkat cells,
primary antibody was diluted at 1:1000, 4° over night