

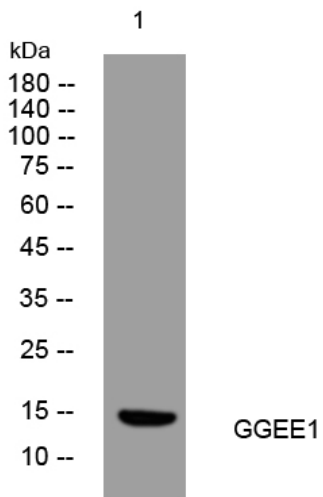


## GGEE1 rabbit pAb

<b>Catalog No</b>	YP-Ab-11685
<b>Isotype</b>	IgG
<b>Reactivity</b>	Human;Rat;Mouse;
<b>Applications</b>	WB
<b>Gene Name</b>	PAGE5 GAGEE1
<b>Protein Name</b>	GGEE1
<b>Immunogen</b>	Synthesized peptide derived from human GGEE1 AA range: 35-85
<b>Specificity</b>	This antibody detects endogenous levels of GGEE1 at Human
<b>Formulation</b>	Liquid in PBS containing 50% glycerol, 0.5% BSA and 0.02% sodium azide.
<b>Source</b>	Polyclonal, Rabbit,IgG
<b>Purification</b>	The antibody was affinity-purified from rabbit serum by affinity-chromatography using specific immunogen.
<b>Dilution</b>	WB 1: 500-2000
<b>Concentration</b>	1 mg/ml
<b>Purity</b>	≥90%
<b>Storage Stability</b>	-20°C/1 year
<b>Synonyms</b>	
<b>Observed Band</b>	
<b>Cell Pathway</b>	
<b>Tissue Specificity</b>	
<b>Function</b>	similarity:Belongs to the GAGE family.,
<b>Background</b>	This gene is a member of family of proteins that are expressed in a variety of tumors and in some fetal and reproductive tissues. The encoded protein may protect cells from programmed cell death. Multiple alternatively spliced transcript variants encoding distinct isoforms have been found. [provided by RefSeq, Jan 2015],
<b>matters needing attention</b>	Avoid repeated freezing and thawing!
<b>Usage suggestions</b>	This product can be used in immunological reaction related experiments. For more information, please consult technical personnel.



## Products Images



Western blot analysis of lysates from HpeG2 cells,  
primary antibody was diluted at 1:1000, 4° over night