



FILA2 rabbit pAb

Catalog No	YP-Ab-11709
Isotype	IgG
Reactivity	Human; Mouse
Applications	WB
Gene Name	FLG2 IFPS
Protein Name	FILA2
Immunogen	Synthesized peptide derived from human FILA2 AA range: 402-452
Specificity	This antibody detects endogenous levels of FILA2 at Human/Mouse
Formulation	Liquid in PBS containing 50% glycerol, 0.5% BSA and 0.02% sodium azide.
Source	Polyclonal, Rabbit,IgG
Purification	The antibody was affinity-purified from rabbit serum by affinity-chromatography using specific immunogen.
Dilution	WB 1: 500-2000
Concentration	1 mg/ml
Purity	≥90%
Storage Stability	-20°C/1 year
Synonyms	
Observed Band	
Cell Pathway	Cytoplasm . Cytoplasmic granule . In the stratum corneum of the epidermis, dispersed diffusely throughout the cytoplasm, while in the stratum granulosum, localized within keratohyalin granules (PubMed:19384417) (PubMed:21531719). In granular keratinocytes and in lower corneocytes, colocalizes with calpain-1/CAPN1. .
Tissue Specificity	Expressed in skin, thymus, stomach and placenta, but not detected in heart, brain, liver, lung, bone marrow, small intestine, spleen, prostate, colon, adrenal gland, kidney, pancreas, mammary gland, bladder, thyroid, salivary gland and trachea. Weakly expressed in esophagus, tonsils and testis (at protein level). In the skin, strongly expressed in the upper stratum granulosum and lower stratum corneum, but not detected in the upper stratum corneum (at protein level) (PubMed:19384417) (PubMed:21531719). In scalp hair follicles, mainly restricted within the granular and cornified cells surrounding the infundibular outer root sheath, with weak expression in central and proximal outer root sheath (at protein level). Tends to be down-regulated in sporadic lesions compared to non-lesional skin
Function	similarity:Belongs to the S100-fused protein family.,similarity:Contains 10 filaggrin repeats.,similarity:Contains 2 EF-hand domains.,similarity:In the N-terminal section; belongs to the S-100 family.,

**Background**

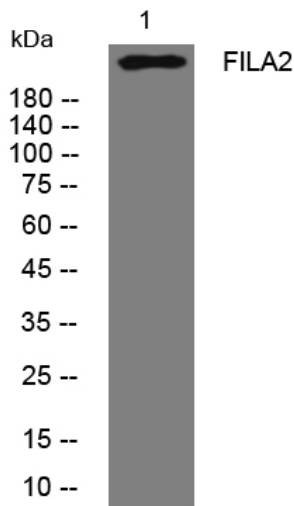
The filaggrin-like protein encoded by this gene is upregulated by calcium, proteolyzed by calpain 1, and is involved in epithelial homeostasis. The encoded protein is required for proper cornification in skin, with defects in this gene being associated with skin diseases. This protein also has a function in skin barrier protection. In fact, in addition to providing a physical barrier, C-terminal fragments of this protein display antimicrobial activity against *P. aeruginosa*. [provided by RefSeq, Dec 2015],

matters needing attention

Avoid repeated freezing and thawing!

Usage suggestions

This product can be used in immunological reaction related experiments. For more information, please consult technical personnel.

Products Images

Western blot analysis of lysates from U2OS cells, primary antibody was diluted at 1:1000, 4° over night