



# SRGP1 rabbit pAb

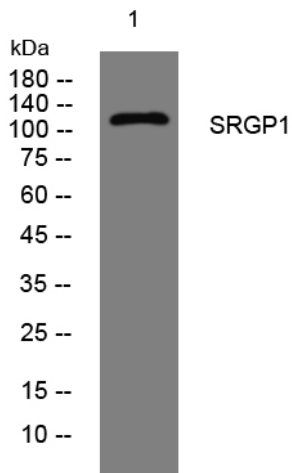
|                                  |  |
|----------------------------------|--|
| <b>Catalog No</b>                | YP-Ab-11751  |
| <b>Isotype</b>                   | IgG  |
| <b>Reactivity</b>                | Human; Mouse   |
| <b>Applications</b>              | WB   |
| <b>Gene Name</b>                 | SRGAP1 ARHGAP13 KIAA1304   |
| <b>Protein Name</b>              | SRGP1  |
| <b>Immunogen</b>                 | Synthesized peptide derived from human SRGP1 AA range: 159-209   |
| <b>Specificity</b>               | This antibody detects endogenous levels of SRGP1 at Human/Mouse  |
| <b>Formulation</b>               | Liquid in PBS containing 50% glycerol, 0.5% BSA and 0.02% sodium azide.  |
| <b>Source</b>                    | Polyclonal, Rabbit,IgG   |
| <b>Purification</b>              | The antibody was affinity-purified from rabbit serum by affinity-chromatography using specific immunogen.  |
| <b>Dilution</b>                  | WB 1: 500-2000   |
| <b>Concentration</b>             | 1 mg/ml  |
| <b>Purity</b>                    | ≥90%   |
| <b>Storage Stability</b>         | -20°C/1 year   |
| <b>Synonyms</b>                  |  |
| <b>Observed Band</b>             |  |
| <b>Cell Pathway</b>              | cytoplasm,cytosol,   |
| <b>Tissue Specificity</b>        | Expressed in brain, lung, kidney, and testis.  |
| <b>Function</b>                  | function:GTPase-activating protein for RhoA and Cdc42 small GTPases. Together with CDC42 seems to be involved in the pathway mediating the repulsive signaling of Robo and Slit proteins in neuronal migration. SLIT2, probably through interaction with ROBO1, increases the interaction of SRGAP1 with ROBO1 and inactivates CDC42.,sequence caution:Intron retention.,similarity:Contains 1 FCH domain.,similarity:Contains 1 Rho-GAP domain.,similarity:Contains 1 SH3 domain.,subunit:Interacts with ROBO1, CDC42 and RHOA.,tissue specificity:Expressed in brain, lung, kidney, and testis., |
| <b>Background</b>                | The protein encoded by this gene is a GTPase activator, working with the GTPase CDC42 to negatively regulate neuronal migration. The encoded protein interacts with the transmembrane receptor ROBO1 to inactivate CDC42. [provided by RefSeq, Sep 2016],  |
| <b>matters needing attention</b> | Avoid repeated freezing and thawing!   |



### Usage suggestions

This product can be used in immunological reaction related experiments. For more information, please consult technical personnel.

## Products Images



Western blot analysis of lysates from U2OS cells,  
primary antibody was diluted at 1:1000, 4° over night