



# ZMYM3 rabbit pAb

<b>Catalog No</b>	YP-Ab-11788
<b>Isotype</b>	IgG
<b>Reactivity</b>	Human; Mouse
<b>Applications</b>	WB
<b>Gene Name</b>	ZMYM3 DXS6673E KIAA0385 ZNF261
<b>Protein Name</b>	ZMYM3
<b>Immunogen</b>	Synthesized peptide derived from human ZMYM3 AA range: 258-308
<b>Specificity</b>	This antibody detects endogenous levels of ZMYM3 at Human/Mouse
<b>Formulation</b>	Liquid in PBS containing 50% glycerol, 0.5% BSA and 0.02% sodium azide.
<b>Source</b>	Polyclonal, Rabbit,IgG
<b>Purification</b>	The antibody was affinity-purified from rabbit serum by affinity-chromatography using specific immunogen.
<b>Dilution</b>	WB 1: 500-2000
<b>Concentration</b>	1 mg/ml
<b>Purity</b>	≥90%
<b>Storage Stability</b>	-20°C/1 year
<b>Synonyms</b>	
<b>Observed Band</b>	
<b>Cell Pathway</b>	Nucleus .
<b>Tissue Specificity</b>	Most abundant in brain, moderate in muscle and heart, low in other tissues except placenta.
<b>Function</b>	disease:A chromosomal aberration involving ZMYM3 may be a cause of X-linked mental retardation in Xq13.1. Translocation t(X;13)(q13.1;?),similarity:Contains 9 MYM-type zinc fingers.,subunit:May be a component of a BHC histone deacetylase complex that contains HDAC1, HDAC2, HMG20B/BRAF35, AOF2/LSD1, RCOR1/CoREST, PHF21A/BHC80, ZMYM2, ZNF217, ZMYM3, GSE1 and GTF2L.,tissue specificity:Most abundant in brain, moderate in muscle and heart, low in other tissues except placenta.,
<b>Background</b>	This gene is located on the X chromosome and is subject to X inactivation. It is highly conserved in vertebrates and most abundantly expressed in the brain. The encoded protein is a component of histone deacetylase-containing multiprotein complexes that function through modifying chromatin structure to keep genes silent. A chromosomal translocation (X;13) involving this gene is associated with X-linked mental retardation. Several alternatively spliced transcript variants have been found for this gene. [provided by RefSeq, Jan 2010],



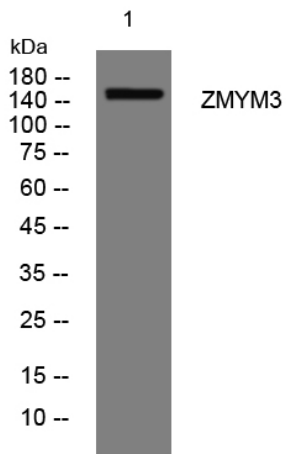
**matters needing attention**

Avoid repeated freezing and thawing!

**Usage suggestions**

This product can be used in immunological reaction related experiments. For more information, please consult technical personnel.

**Products Images**



Western blot analysis of lysates from A549 cells, primary antibody was diluted at 1:1000, 4°over night