



## CLCA3 rabbit pAb

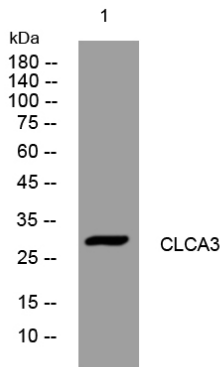
<b>Catalog No</b>	YP-Ab-11798
<b>Isotype</b>	IgG
<b>Reactivity</b>	Human;Rat;Mouse;
<b>Applications</b>	WB
<b>Gene Name</b>	CLCA3P CLCA3
<b>Protein Name</b>	CLCA3
<b>Immunogen</b>	Synthesized peptide derived from human CLCA3 AA range: 56-106
<b>Specificity</b>	This antibody detects endogenous levels of CLCA3 at Human
<b>Formulation</b>	Liquid in PBS containing 50% glycerol, 0.5% BSA and 0.02% sodium azide.
<b>Source</b>	Polyclonal, Rabbit,IgG
<b>Purification</b>	The antibody was affinity-purified from rabbit serum by affinity-chromatography using specific immunogen.
<b>Dilution</b>	WB 1: 500-2000
<b>Concentration</b>	1 mg/ml
<b>Purity</b>	≥90%
<b>Storage Stability</b>	-20°C/1 year
<b>Synonyms</b>	
<b>Observed Band</b>	
<b>Cell Pathway</b>	Secreted .
<b>Tissue Specificity</b>	Expressed in the lung, trachea, spleen, thymus and mammary gland.
<b>Function</b>	PTM:N-glycosylated.,similarity:Belongs to the CLCR family.,tissue specificity:Expressed in the lung, trachea, spleen, thymus and mammary gland.,
<b>Background</b>	This gene is a transcribed pseudogene belonging to the calcium sensitive chloride conductance protein family. To date, all members of this gene family map to the same site on chromosome 1p31-p22 and share high degrees of homology in size, sequence and predicted structure, but differ significantly in their tissue distributions. This gene contains several nonsense codons compared to other family members that render the transcript a candidate for nonsense-mediated mRNA decay (NMD). Therefore, this gene is unlikely to be protein-coding. [provided by RefSeq, Jan 2009],
<b>matters needing attention</b>	Avoid repeated freezing and thawing!



### Usage suggestions

This product can be used in immunological reaction related experiments. For more information, please consult technical personnel.

## Products Images



Western blot analysis of lysates from U2OS cells,  
primary antibody was diluted at 1:1000, 4° over night