



# AFAF rabbit pAb

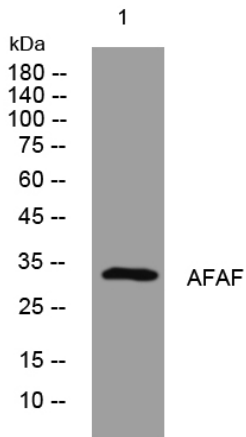
<b>Catalog No</b>	YP-Ab-11800
<b>Isotype</b>	IgG
<b>Reactivity</b>	Human;Rat;Mouse;
<b>Applications</b>	WB
<b>Gene Name</b>	AFAF C9orf11
<b>Protein Name</b>	AFAF
<b>Immunogen</b>	Synthesized peptide derived from human AFAF AA range: 223-273
<b>Specificity</b>	This antibody detects endogenous levels of AFAF at Human
<b>Formulation</b>	Liquid in PBS containing 50% glycerol, 0.5% BSA and 0.02% sodium azide.
<b>Source</b>	Polyclonal, Rabbit,IgG
<b>Purification</b>	The antibody was affinity-purified from rabbit serum by affinity-chromatography using specific immunogen.
<b>Dilution</b>	WB 1: 500-2000
<b>Concentration</b>	1 mg/ml
<b>Purity</b>	≥90%
<b>Storage Stability</b>	-20°C/1 year
<b>Synonyms</b>	
<b>Observed Band</b>	
<b>Cell Pathway</b>	Cytoplasmic vesicle, secretory vesicle, acrosome membrane ; Single-pass type I membrane protein . Cytoplasmic vesicle, secretory vesicle, acrosome inner membrane ; Single-pass type I membrane protein . Cytoplasmic vesicle, secretory vesicle, acrosome outer membrane ; Single-pass type I membrane protein . In the anterior acrosome region, enriched on the inner acrosomal membrane but minimal on the outer acrosomal membrane; in contrast in the posterior acrosome region enriched on both the inner and outer acrosomal membranes. .
<b>Tissue Specificity</b>	Isoform 1 is highly expressed in testis. Isoform 2 is expressed at low levels in skin and blood.
<b>Function</b>	function:Involved in acrosome biogenesis.,tissue specificity:Isoform 1 highly expressed in testis. Isoform 2 is expressed at low levels in skin and blood.,
<b>Background</b>	
<b>matters needing attention</b>	Avoid repeated freezing and thawing!



### Usage suggestions

This product can be used in immunological reaction related experiments. For more information, please consult technical personnel.

## Products Images



Western blot analysis of lysates from HEK293 cells, primary antibody was diluted at 1:1000, 4° over night