

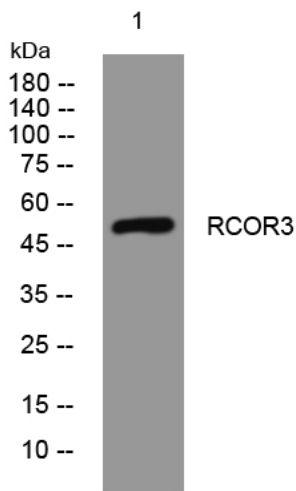


RCOR3 rabbit pAb

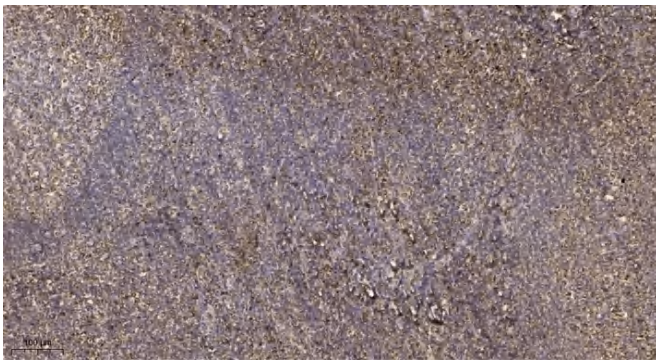
Catalog No	YP-Ab-11810
Isotype	IgG
Reactivity	Human; Mouse
Applications	WB;IHC
Gene Name	RCOR3 KIAA1343
Protein Name	RCOR3
Immunogen	Synthesized peptide derived from human RCOR3 AA range: 318-368
Specificity	This antibody detects endogenous levels of RCOR3 at Human/Mouse
Formulation	Liquid in PBS containing 50% glycerol, 0.5% BSA and 0.02% sodium azide.
Source	Polyclonal, Rabbit,IgG
Purification	The antibody was affinity-purified from rabbit serum by affinity-chromatography using specific immunogen.
Dilution	WB 1:500-2000;IHC-p 1:50-300
Concentration	1 mg/ml
Purity	≥90%
Storage Stability	-20°C/1 year
Synonyms	
Observed Band	
Cell Pathway	Nucleus .
Tissue Specificity	
Function	function:May act as a component of a corepressor complex that represses transcription .,similarity:Belongs to the CoREST family.,similarity:Contains 1 ELM2 domain.,similarity:Contains 2 SANT domains.,
Background	
matters needing attention	Avoid repeated freezing and thawing!
Usage suggestions	This product can be used in immunological reaction related experiments. For more information, please consult technical personnel.



Products Images



Western blot analysis of lysates from KB cells, primary antibody was diluted at 1:1000, 4° over night



Immunohistochemical analysis of paraffin-embedded human tonsil. 1, Antibody was diluted at 1:200(4° overnight). 2, Tris-EDTA,pH9.0 was used for antigen retrieval. 3,Secondary antibody was diluted at 1:200(room temperature, 45min).