



S27A1 rabbit pAb

Catalog No	YP-Ab-11814
Isotype	IgG
Reactivity	Human; Mouse;Rat
Applications	WB
Gene Name	SLC27A1 ACSVL5 FATP1
Protein Name	S27A1
Immunogen	Synthesized peptide derived from human S27A1 AA range: 115-165
Specificity	This antibody detects endogenous levels of S27A1 at Human/Mouse/Rat
Formulation	Liquid in PBS containing 50% glycerol, 0.5% BSA and 0.02% sodium azide.
Source	Polyclonal, Rabbit,IgG
Purification	The antibody was affinity-purified from rabbit serum by affinity-chromatography using specific immunogen.
Dilution	WB 1: 500-2000
Concentration	1 mg/ml
Purity	≥90%
Storage Stability	-20°C/1 year
Synonyms	
Observed Band	
Cell Pathway	Cell membrane ; Single-pass membrane protein . Endomembrane system ; Single-pass membrane protein . Cytoplasm . Plasma membrane and intracellular membranes, at least in adipocytes. In adipocytes, but not myocytes, insulin via the mTORC1 signaling pathway induces a rapid translocation of SLC27A1 from intracellular compartments to the plasma membrane, paralleled by increased LCFA uptake. Insulin-dependent translocation from the cytoplasm to the cell membrane is regulated by EPRS1. Predominantly cytoplasmic in myocytes. .
Tissue Specificity	Highest levels of expression are detected in muscle and adipose tissue small, intermediate levels in small intestine, and barely detectable in liver. Expressed in brain gray matter (PubMed:21395585).
Function	function:Involved in translocation of long-chain fatty acids (LFCA) across the plasma membrane. The LFCA import appears to be hormone-regulated in a tissue-specific manner. In adipocytes, but not myocytes, insulin induces a rapid translocation of Fatp1 from intracellular compartments to the plasma membrane, paralleled by increased LFCA uptake. May act directly as a bona fide transporter, or alternatively, in a cytoplasmic or membrane-associated multimeric protein complex to trap and draw fatty acids towards accumulation. Plays a pivotal role in regulating available LFCA substrates from exogenous sources in tissues undergoing high levels of beta-oxidation or triglyceride synthesis. May be involved



in regulation of cholesterol metabolism. Has acyl-CoA ligase activity for long-chain and very-long-chain fatty acids.,miscellaneous:FATP1-mediated fatty acid uptake is associated to paramaters r

Background

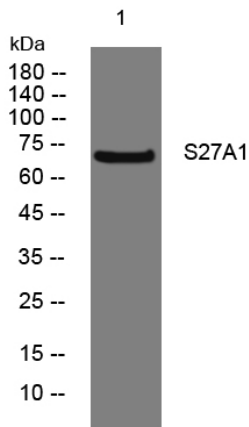
matters needing attention

Avoid repeated freezing and thawing!

Usage suggestions

This product can be used in immunological reaction related experiments. For more information, please consult technical personnel.

Products Images



Western blot analysis of lysates from U2OS cells, primary antibody was diluted at 1:1000, 4°over night