



# F19A4 rabbit pAb

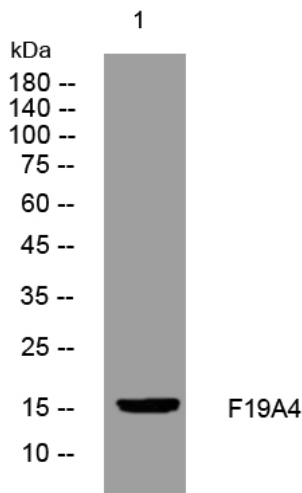
<b>Catalog No</b>	YP-Ab-11843
<b>Isotype</b>	IgG
<b>Reactivity</b>	Human; Mouse
<b>Applications</b>	WB
<b>Gene Name</b>	FAM19A4 Tafa4
<b>Protein Name</b>	F19A4
<b>Immunogen</b>	Synthesized peptide derived from human F19A4 AA range: 40-90
<b>Specificity</b>	This antibody detects endogenous levels of F19A4 at Human/Mouse
<b>Formulation</b>	Liquid in PBS containing 50% glycerol, 0.5% BSA and 0.02% sodium azide.
<b>Source</b>	Polyclonal, Rabbit,IgG
<b>Purification</b>	The antibody was affinity-purified from rabbit serum by affinity-chromatography using specific immunogen.
<b>Dilution</b>	WB 1: 500-2000
<b>Concentration</b>	1 mg/ml
<b>Purity</b>	≥90%
<b>Storage Stability</b>	-20°C/1 year
<b>Synonyms</b>	
<b>Observed Band</b>	
<b>Cell Pathway</b>	Secreted .
<b>Tissue Specificity</b>	Expressed in brain (PubMed:15028294). Expressed in LPS-stimulated monocytes and macrophages, especially in polarized M1 (PubMed:25109685).
<b>Function</b>	caution:The sequence shown here is derived from an Ensembl automatic analysis pipeline and should be considered as preliminary data.,similarity:Belongs to the FAM19/Tafa4 family.,tissue specificity:Brain-specific.,
<b>Background</b>	This gene is a member of the Tafa4 family which is composed of five highly homologous genes that encode small secreted proteins. These proteins contain conserved cysteine residues at fixed positions, and are distantly related to MIP-1alpha, a member of the CC-chemokine family. The Tafa4 proteins are predominantly expressed in specific regions of the brain, and are postulated to function as brain-specific chemokines or neurokines, that act as regulators of immune and nervous cells. Alternatively spliced transcript variants have been observed for this gene. [provided by RefSeq, Nov 2011],
<b>matters needing attention</b>	Avoid repeated freezing and thawing!



### Usage suggestions

This product can be used in immunological reaction related experiments. For more information, please consult technical personnel.

## Products Images



Western blot analysis of lysates from CACO2 cells, primary antibody was diluted at 1:1000, 4° over night