



## KR261 rabbit pAb

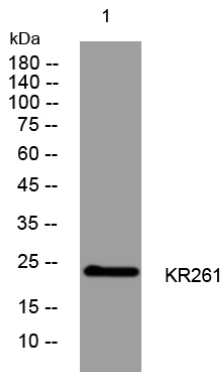
<b>Catalog No</b>	YP-Ab-11845
<b>Isotype</b>	IgG
<b>Reactivity</b>	Human; Mouse
<b>Applications</b>	WB;IHC
<b>Gene Name</b>	KRTAP26-1 KAP26.1
<b>Protein Name</b>	KR261
<b>Immunogen</b>	Synthesized peptide derived from human KR261 AA range: 153-203
<b>Specificity</b>	This antibody detects endogenous levels of KR261 at Human/Mouse
<b>Formulation</b>	Liquid in PBS containing 50% glycerol, 0.5% BSA and 0.02% sodium azide.
<b>Source</b>	Polyclonal, Rabbit,IgG
<b>Purification</b>	The antibody was affinity-purified from rabbit serum by affinity-chromatography using specific immunogen.
<b>Dilution</b>	WB 1:500-2000;IHC-p 1:50-300
<b>Concentration</b>	1 mg/ml
<b>Purity</b>	≥90%
<b>Storage Stability</b>	-20°C/1 year
<b>Synonyms</b>	
<b>Observed Band</b>	
<b>Cell Pathway</b>	intermediate filament,
<b>Tissue Specificity</b>	Localized high up in the well differentiated portion of the hair follicle cuticle (about 10-15 cell layers above the apex of the dermal papilla).
<b>Function</b>	function:In the hair cortex, hair keratin intermediate filaments are embedded in an interfilamentous matrix, consisting of hair keratin-associated proteins (KRTAP), which are essential for the formation of a rigid and resistant hair shaft through their extensive disulfide bond cross-linking with abundant cysteine residues of hair keratins. The matrix proteins include the high-sulfur and high-glycine-tyrosine keratins.,similarity:Belongs to the PMG family.,subunit:Interacts with hair keratins.,tissue specificity:Localized high up in the well differentiated portion of the hair follicle cuticle (about 10-15 cell layers above the apex of the dermal papilla).,
<b>Background</b>	
<b>matters needing attention</b>	Avoid repeated freezing and thawing!



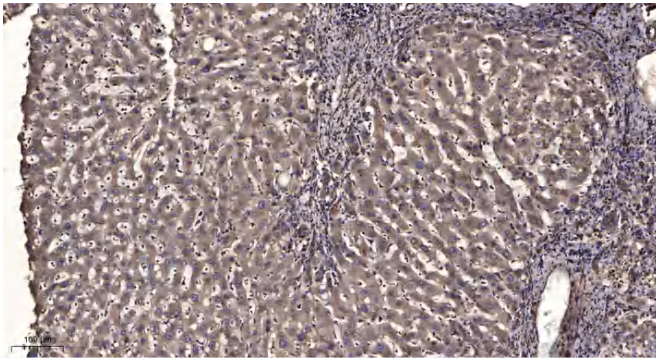
### Usage suggestions

This product can be used in immunological reaction related experiments. For more information, please consult technical personnel.

## Products Images



Western blot analysis of lysates from MCF-7 cells, primary antibody was diluted at 1:1000, 4° over night



Immunohistochemical analysis of paraffin-embedded human liver cancer. 1, Antibody was diluted at 1:200(4° overnight). 2, Tris-EDTA, pH9.0 was used for antigen retrieval. 3, Secondary antibody was diluted at 1:200(room temperature, 45min).