



EP3A rabbit pAb

Catalog No	YP-Ab-11858
Isotype	IgG
Reactivity	Human;Rat;Mouse;
Applications	WB
Gene Name	EDDM3A FAM12A HE3A
Protein Name	EP3A
Immunogen	Synthesized peptide derived from human EP3A AA range: 1-51
Specificity	This antibody detects endogenous levels of EP3A at Human
Formulation	Liquid in PBS containing 50% glycerol, 0.5% BSA and 0.02% sodium azide.
Source	Polyclonal, Rabbit,IgG
Purification	The antibody was affinity-purified from rabbit serum by affinity-chromatography using specific immunogen.
Dilution	WB 1: 500-2000
Concentration	1 mg/ml
Purity	≥90%
Storage Stability	-20°C/1 year
Synonyms	
Observed Band	
Cell Pathway	Secreted .
Tissue Specificity	Epididymis, with predominant expression in the corpus region. Moderately expressed in the vas deferens; only low levels are detectable in the caput and cauda regions.
Function	function:Possible function in sperm maturation.,tissue specificity:Epididymis, with predominant expression in the corpus region. Moderately expressed in the vas deferens; only low levels are detectable in the caput and cauda regions.,
Background	Testicular sperm are morphologically differentiated but are not progressively motile nor able to fertilize an egg. Post-testicular maturation requires exposure of spermatozoa to the microenvironment of the epididymal lumen. Spermatozoa undergo extensive changes in the epididymis, including enzymatic modifications, loss of pre-existing components and addition of new glycoproteins from epididymal secretions. These modifying proteins and enzymes are synthesized by epithelial cells lining the epididymal duct and secreted apically into the lumen, where they come into contact with, and may be absorbed onto, the sperm membranes. The proteins encoded by the genes in this cluster are synthesized and secreted by epididymal epithelial cells. [provided by RefSeq, Jul 2008],



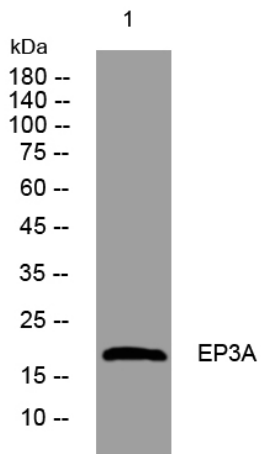
matters needing attention

Avoid repeated freezing and thawing!

Usage suggestions

This product can be used in immunological reaction related experiments. For more information, please consult technical personnel.

Products Images



Western blot analysis of lysates from Jarkat cells, primary antibody was diluted at 1:1000, 4°over night