



RDH14 rabbit pAb

Catalog No	YP-Ab-11860
Isotype	IgG
Reactivity	Human; Mouse
Applications	WB;ELISA;IHC
Gene Name	RDH14 PAN2 UNQ529/PRO1072
Protein Name	RDH14
Immunogen	Synthesized peptide derived from human RDH14 AA range: 283-333
Specificity	This antibody detects endogenous levels of RDH14 at Human/Mouse
Formulation	Liquid in PBS containing 50% glycerol, 0.5% BSA and 0.02% sodium azide.
Source	Polyclonal, Rabbit,IgG
Purification	The antibody was affinity-purified from rabbit serum by affinity-chromatography using specific immunogen.
Dilution	WB 1:500-2000;IHC-p 1:50-300; ELISA 2000-20000
Concentration	1 mg/ml
Purity	≥90%
Storage Stability	-20°C/1 year
Synonyms	
Observed Band	
Cell Pathway	nucleus,mitochondrion,lysosomal membrane,endoplasmic reticulum,endoplasmic reticulum membrane,membrane,
Tissue Specificity	Widely expressed.
Function	catalytic activity:A 5'-ribonucleotide + H(2)O = a ribonucleoside + phosphate.,cofactor:Magnesium.,enzyme regulation:Activated by ADP.,function:Dephosphorylates the 5' and 2'(3')-phosphates of deoxyribonucleotides. Helps to regulate adenosine levels.,function:Exhibits an oxidoreductive catalytic activity towards retinoids. Most efficient as an NADPH-dependent retinal reductase. Displays high activity toward 9-cis and all-trans-retinol. No steroid dehydrogenase activity detected.,similarity:Belongs to the 5'-nucleotidase type 3 family.,similarity:Belongs to the short-chain dehydrogenases/reductases (SDR) family.,tissue specificity:Expressed in brain, kidney, pancreas and placenta.,tissue specificity:Highly expressed in testis, placenta and pancreas. Detected at lower levels in heart, kidney, liver and lung.,
Background	



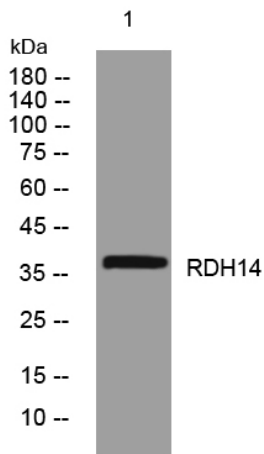
matters needing attention

Avoid repeated freezing and thawing!

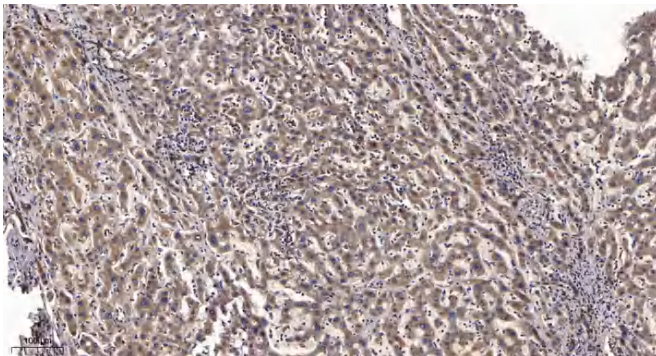
Usage suggestions

This product can be used in immunological reaction related experiments. For more information, please consult technical personnel.

Products Images



Western blot analysis of lysates from MDA-MB cells, primary antibody was diluted at 1:1000, 4° over night



Immunohistochemical analysis of paraffin-embedded human liver cancer. 1, Antibody was diluted at 1:200(4° overnight). 2, Tris-EDTA, pH9.0 was used for antigen retrieval. 3, Secondary antibody was diluted at 1:200(room temperature, 45min).