

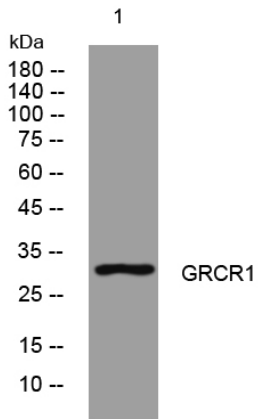


GRCR1 rabbit pAb

Catalog No	YP-Ab-11876
Isotype	IgG
Reactivity	Human; Mouse
Applications	WB
Gene Name	GRXCR1 DFNB25
Protein Name	GRCR1
Immunogen	Synthesized peptide derived from human GRCR1 AA range: 132-182
Specificity	This antibody detects endogenous levels of GRCR1 at Human/Mouse
Formulation	Liquid in PBS containing 50% glycerol, 0.5% BSA and 0.02% sodium azide.
Source	Polyclonal, Rabbit,IgG
Purification	The antibody was affinity-purified from rabbit serum by affinity-chromatography using specific immunogen.
Dilution	WB 1: 500-2000
Concentration	1 mg/ml
Purity	≥90%
Storage Stability	-20°C/1 year
Synonyms	
Observed Band	
Cell Pathway	Cell projection, stereocilium . Cell projection, microvillus . Cell projection, kinocilium . In the inner ear, localized to stereocilia, apical microvilli of sensory cells and kinocilia. .
Tissue Specificity	Expressed at low levels in adult lung, brain and duodenum with moderate levels in testis. Highly expressed in fetal cochlea.
Function	similarity:Belongs to the GRXCR1 family.,similarity:Contains 1 glutaredoxin domain.,
Background	This gene is one of 60 loci associated with autosomal-recessive nonsyndromic hearing impairment. This gene encodes a protein which contains GRX-like domains; these domains play a role in the S-glutathionylation of proteins and may be involved in actin organization in hair cells. [provided by RefSeq, Sep 2010],
matters needing attention	Avoid repeated freezing and thawing!
Usage suggestions	This product can be used in immunological reaction related experiments. For more information, please consult technical personnel.



Products Images



Western blot analysis of lysates from PC-12 cells,
primary antibody was diluted at 1:1000, 4° over night