



SIN1 rabbit pAb

Catalog No	YP-Ab-11892
Isotype	IgG
Reactivity	Human; Mouse;Rat
Applications	WB;ELISA;IHC
Gene Name	MAPKAP1 MIP1 SIN1
Protein Name	SIN1
Immunogen	Synthesized peptide derived from human SIN1 AA range: 193-243
Specificity	This antibody detects endogenous levels of SIN1 at Human/Mouse/Rat
Formulation	Liquid in PBS containing 50% glycerol, 0.5% BSA and 0.02% sodium azide.
Source	Polyclonal, Rabbit,IgG
Purification	The antibody was affinity-purified from rabbit serum by affinity-chromatography using specific immunogen.
Dilution	WB 1:500-2000;IHC-p 1:50-300; ELISA 2000-20000
Concentration	1 mg/ml
Purity	≥90%
Storage Stability	-20°C/1 year
Synonyms	
Observed Band	
Cell Pathway	Cell membrane; Peripheral membrane protein. Cytoplasmic vesicle. Nucleus.
Tissue Specificity	Ubiquitously expressed, with highest levels in heart and skeletal muscle.
Function	function:Essential component of the TORC2 complex, which plays a critical role in AKT1 'Ser-473' phosphorylation, and may modulate the phosphorylation of PKCA and regulate actin cytoskeleton organization. Inhibits MAP3K2 by preventing its dimerization and autophosphorylation. Inhibits HRAS and KRAs signaling. Enhances osmotic stress-induced phosphorylation of ATF2 and ATF2-mediated transcription.,similarity:Belongs to the SIN1 family.,subunit:All isoforms except isoform 4 are able to be part of the target of rapamycin 2 complex (TORC2) comprised of FRAP1, LST8, PROTOR1, RICTOR and MAPKAP1. Interacts with ATF2, MAP3K2 and MAPK8. Interacts with GTP-bound HRAS and KRAS. Interacts with IFNAR2.,tissue specificity:Ubiquitously expressed, with highest levels in heart and skeletal muscle.,
Background	This gene encodes a protein that is highly similar to the yeast SIN1 protein, a stress-activated protein kinase. Alternatively spliced transcript variants encoding distinct isoforms have been described. Alternate polyadenylation sites as well as alternate 3' UTRs have been identified for transcripts of this gene. [provided



by RefSeq, Jul 2008],

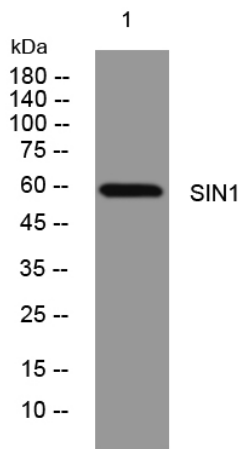
matters needing attention

Avoid repeated freezing and thawing!

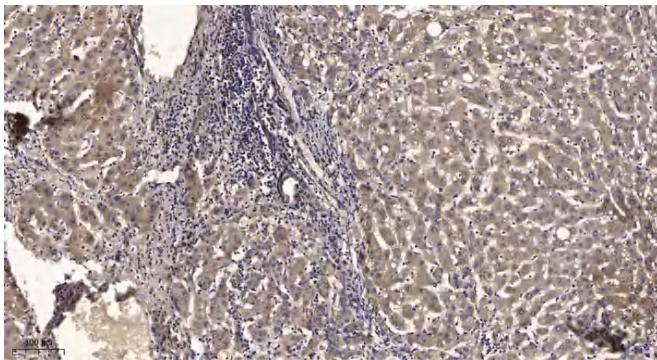
Usage suggestions

This product can be used in immunological reaction related experiments. For more information, please consult technical personnel.

Products Images



Western blot analysis of lysates from U2OS cells, primary antibody was diluted at 1:1000, 4° over night



Immunohistochemical analysis of paraffin-embedded human liver cancer. 1, Antibody was diluted at 1:200(4° overnight). 2, Tris-EDTA,pH9.0 was used for antigen retrieval. 3,Secondary antibody was diluted at 1:200(room temperature, 45min).