



AMELY rabbit pAb

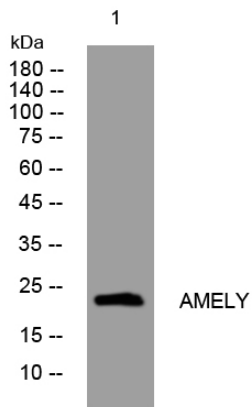
Catalog No	YP-Ab-11902
Isotype	IgG
Reactivity	Human
Applications	WB
Gene Name	AMELY AMGL AMGY
Protein Name	AMELY
Immunogen	Synthesized peptide derived from human AMELY.AA range 17-57
Specificity	This antibody detects endogenous levels of AMELY at Human
Formulation	Liquid in PBS containing 50% glycerol, 0.5% BSA and 0.02% sodium azide.
Source	Polyclonal, Rabbit,IgG
Purification	The antibody was affinity-purified from rabbit serum by affinity-chromatography using specific immunogen.
Dilution	WB 1: 500-2000
Concentration	1 mg/ml
Purity	≥90%
Storage Stability	-20°C/1 year
Synonyms	
Observed Band	
Cell Pathway	Secreted, extracellular space, extracellular matrix.
Tissue Specificity	
Function	developmental stage:Transiently but abundantly expressed by ameloblasts during tooth development. Amelogenin is the predominant protein in developing dental enamel.,function:Plays a role in biomineralization. Seems to regulate the formation of crystallites during the secretory stage of tooth enamel development. Thought to play a major role in the structural organization and mineralization of developing enamel.,miscellaneous:This isoform is encoded on the Y chromosome.,similarity:Belongs to the amelogenin family.,
Background	This gene encodes a member of the amelogenin family of extracellular matrix proteins. Amelogenins are involved in biomineralization during tooth enamel development. Mutations in a related gene on chromosome X cause X-linked amelogenesis imperfecta. [provided by RefSeq, Jul 2008],
matters needing attention	Avoid repeated freezing and thawing!



Usage suggestions

This product can be used in immunological reaction related experiments. For more information, please consult technical personnel.

Products Images



Western blot analysis of lysates from HuvEc cells, primary antibody was diluted at 1:1000, 4° over night