

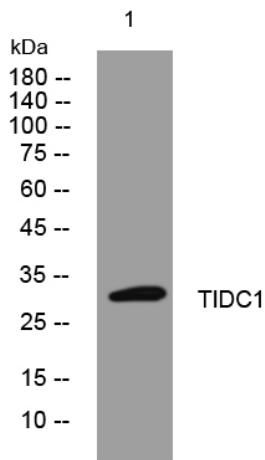


TIDC1 rabbit pAb

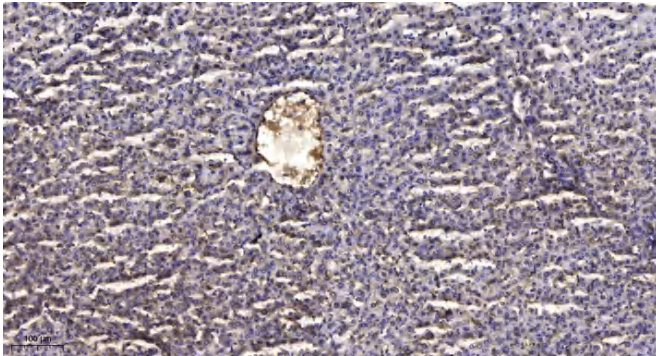
| | |
|----------------------------------|---|
| Catalog No | YP-Ab-11913 |
| Isotype | IgG |
| Reactivity | Human; Mouse;Rat |
| Applications | WB;ELISA;IHC |
| Gene Name | TIMMDC1 C3orf1 UNQ247/PRO284 |
| Protein Name | TIDC1 |
| Immunogen | Synthesized peptide derived from human TIDC1 AA range: 74-124 |
| Specificity | This antibody detects endogenous levels of TIDC1 at Human/Mouse/Rat |
| Formulation | Liquid in PBS containing 50% glycerol, 0.5% BSA and 0.02% sodium azide. |
| Source | Polyclonal, Rabbit,IgG |
| Purification | The antibody was affinity-purified from rabbit serum by affinity-chromatography using specific immunogen. |
| Dilution | WB 1:500-2000;IHC-p 1:50-300; ELISA 2000-20000 |
| Concentration | 1 mg/ml |
| Purity | ≥90% |
| Storage Stability | -20°C/1 year |
| Synonyms | |
| Observed Band | |
| Cell Pathway | Mitochondrion membrane ; Multi-pass membrane protein . |
| Tissue Specificity | Generalized expression enhanced in heart and skeletal muscle. |
| Function | tissue specificity:Generalized expression enhanced in heart and skeletal muscle., |
| Background | |
| matters needing attention | Avoid repeated freezing and thawing! |
| Usage suggestions | This product can be used in immunological reaction related experiments. For more information, please consult technical personnel. |



Products Images



Western blot analysis of lysates from VEC cells, primary antibody was diluted at 1:1000, 4° over night



Immunohistochemical analysis of paraffin-embedded human liver cancer. 1, Antibody was diluted at 1:200(4° overnight). 2, Tris-EDTA,pH9.0 was used for antigen retrieval. 3,Secondary antibody was diluted at 1:200(room temperature, 45min).