



FKB10 rabbit pAb

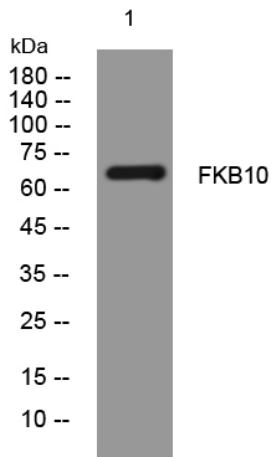
Catalog No	YP-Ab-11938
Isotype	IgG
Reactivity	Human; Mouse
Applications	WB
Gene Name	FKBP10 FKBP65 PSEC0056
Protein Name	FKB10
Immunogen	Synthesized peptide derived from human FKB10 AA range: 339-389
Specificity	This antibody detects endogenous levels of FKB10 at Human/Mouse
Formulation	Liquid in PBS containing 50% glycerol, 0.5% BSA and 0.02% sodium azide.
Source	Polyclonal, Rabbit,IgG
Purification	The antibody was affinity-purified from rabbit serum by affinity-chromatography using specific immunogen.
Dilution	WB 1: 500-2000
Concentration	1 mg/ml
Purity	≥90%
Storage Stability	-20°C/1 year
Synonyms	
Observed Band	
Cell Pathway	Endoplasmic reticulum lumen .
Tissue Specificity	
Function	catalytic activity:Peptidylproline (omega=180) = peptidylproline (omega=0).,enzyme regulation:Inhibited by both FK506 and rapamycin, but not by cyclosporin A.,function:PPIases accelerate the folding of proteins during protein synthesis.,PTM:Glycosylated and phosphorylated.,similarity:Belongs to the FKBP-type PPIase family.,similarity:Contains 2 EF-hand domains.,similarity:Contains 4 PPIase FKBP-type domains.,
Background	The protein encoded by this gene belongs to the FKBP-type peptidyl-prolyl cis/trans isomerase (PPIase) family. This protein localizes to the endoplasmic reticulum and acts as a molecular chaperone. Alternatively spliced variants encoding different isoforms have been reported, but their biological validity has not been determined.[provided by RefSeq, Nov 2009],
matters needing attention	Avoid repeated freezing and thawing!



Usage suggestions

This product can be used in immunological reaction related experiments. For more information, please consult technical personnel.

Products Images



Western blot analysis of lysates from K562 cells,
primary antibody was diluted at 1:1000, 4° over night