

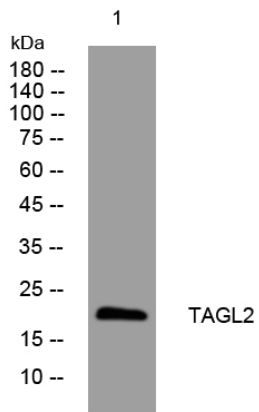


# TAGL2 rabbit pAb

<b>Catalog No</b>	YP-Ab-11947
<b>Isotype</b>	IgG
<b>Reactivity</b>	Human; Mouse;Rat
<b>Applications</b>	WB
<b>Gene Name</b>	TAGLN2 KIAA0120 CDABP0035
<b>Protein Name</b>	TAGL2
<b>Immunogen</b>	Synthesized peptide derived from human TAGL2 AA range: 90-140
<b>Specificity</b>	This antibody detects endogenous levels of TAGL2 at Human/Mouse/Rat
<b>Formulation</b>	Liquid in PBS containing 50% glycerol, 0.5% BSA and 0.02% sodium azide.
<b>Source</b>	Polyclonal, Rabbit,IgG
<b>Purification</b>	The antibody was affinity-purified from rabbit serum by affinity-chromatography using specific immunogen.
<b>Dilution</b>	WB 1: 500-2000
<b>Concentration</b>	1 mg/ml
<b>Purity</b>	≥90%
<b>Storage Stability</b>	-20°C/1 year
<b>Synonyms</b>	
<b>Observed Band</b>	
<b>Cell Pathway</b>	cell-cell adherens junction,vesicle,extracellular exosome,
<b>Tissue Specificity</b>	Expressed in epididymis (at protein level).
<b>Function</b>	similarity:Belongs to the calponin family.,similarity:Contains 1 calponin-like repeat.,similarity:Contains 1 CH (calponin-homology) domain.,
<b>Background</b>	The protein encoded by this gene is similar to the protein transgelin, which is one of the earliest markers of differentiated smooth muscle. The specific function of this protein has not yet been determined, although it is thought to be a tumor suppressor. Multiple transcript variants encoding different isoforms have been found for this gene. [provided by RefSeq, Mar 2013],
<b>matters needing attention</b>	Avoid repeated freezing and thawing!
<b>Usage suggestions</b>	This product can be used in immunological reaction related experiments. For more information, please consult technical personnel.



## Products Images



Western blot analysis of lysates from HCT116 cells,  
primary antibody was diluted at 1:1000, 4° over night