



ARL6 rabbit pAb

Catalog No	YP-Ab-11982
Isotype	IgG
Reactivity	Human; Mouse
Applications	WB
Gene Name	ARL6
Protein Name	ARL6
Immunogen	Synthesized peptide derived from human ARL6 AA range: 105-155
Specificity	This antibody detects endogenous levels of ARL6 at Human/Mouse
Formulation	Liquid in PBS containing 50% glycerol, 0.5% BSA and 0.02% sodium azide.
Source	Polyclonal, Rabbit,IgG
Purification	The antibody was affinity-purified from rabbit serum by affinity-chromatography using specific immunogen.
Dilution	WB 1: 500-2000
Concentration	1 mg/ml
Purity	≥90%
Storage Stability	-20°C/1 year
Synonyms	
Observed Band	
Cell Pathway	Cell projection, cilium membrane; Peripheral membrane protein; Cytoplasmic side. Cytoplasm, cytoskeleton, cilium axoneme. Cytoplasm, cytoskeleton, cilium basal body. Appears in a pattern of punctae flanking the microtubule axoneme that likely correspond to small membrane-associated patches. Localizes to the so-called ciliary gate where vesicles carrying ciliary cargo fuse with the membrane.
Tissue Specificity	
Function	disease:Defects in ARL6 are a cause of Bardet-Biedl syndrome type 3 (BBS3) [MIM:209900]. Bardet-Biedl syndrome (BBS) is a genetically heterogeneous disorder characterized by usually severe pigmentary retinopathy, early onset obesity, polydactyly, hypogenitalism, renal malformation and mental retardation. Secondary features include diabetes mellitus, hypertension and congenital heart disease. similarity:Belongs to the small GTPase superfamily. Arf family. subunit:Interacts with SEC61B, ARL6IP1, ARL6IP2, ARL6IP3, ARL6IP4 ARL6IP5 and ARL6IP6.,
Background	The protein encoded by this gene belongs to the ARF-like (ADP ribosylation factor-like) sub-family of the ARF family of GTP-binding proteins which are involved in regulation of intracellular traffic. Mutations in this gene are associated



with Bardet-Biedl syndrome (BBS). A vision-specific transcript, encoding long isoform BBS3L, has been described (PMID: 20333246). [provided by RefSeq, Apr 2016],

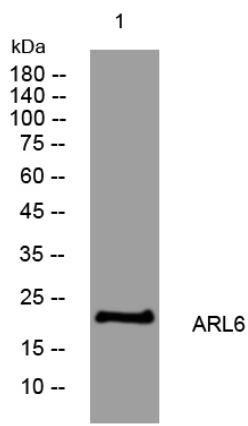
matters needing attention

Avoid repeated freezing and thawing!

Usage suggestions

This product can be used in immunological reaction related experiments. For more information, please consult technical personnel.

Products Images



Western blot analysis of lysates from MCF-7 cells, primary antibody was diluted at 1:1000, 4° over night