



SLTM rabbit pAb

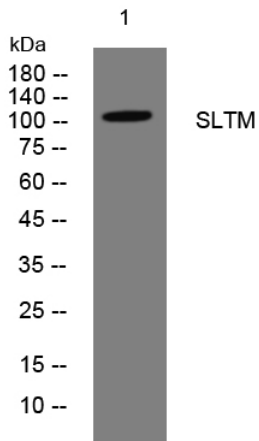
Catalog No	YP-Ab-11998
Isotype	IgG
Reactivity	Human; Mouse
Applications	WB;IHC
Gene Name	SLTM MET
Protein Name	SLTM
Immunogen	Synthesized peptide derived from human SLTM AA range: 562-612
Specificity	This antibody detects endogenous levels of SLTM at Human/Mouse
Formulation	Liquid in PBS containing 50% glycerol, 0.5% BSA and 0.02% sodium azide.
Source	Polyclonal, Rabbit,IgG
Purification	The antibody was affinity-purified from rabbit serum by affinity-chromatography using specific immunogen.
Dilution	WB 1:500-2000;IHC-p 1:50-300
Concentration	1 mg/ml
Purity	≥90%
Storage Stability	-20°C/1 year
Synonyms	
Observed Band	
Cell Pathway	Nucleus . Detected in punctate structures. .
Tissue Specificity	
Function	function:When overexpressed, acts as a general inhibitor of transcription that eventually leads to apoptosis.,PTM:Phosphorylated upon DNA damage, probably by ATM or ATR.,sequence caution:Contaminating sequence. Potential poly-A sequence.,sequence caution:Translation N-terminally extended.,similarity:Contains 1 RRM (RNA recognition motif) domain.,similarity:Contains 1 SAP domain.,subcellular location:Detected in punctate structures.,
Background	
matters needing attention	Avoid repeated freezing and thawing!



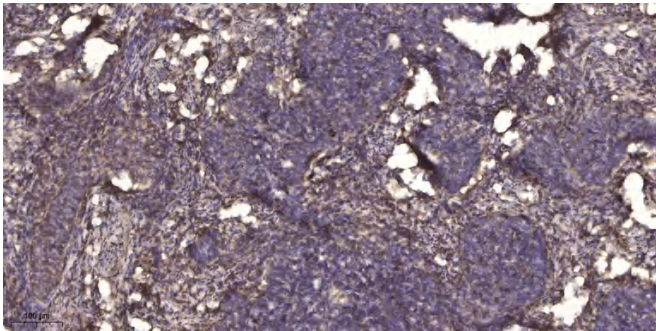
Usage suggestions

This product can be used in immunological reaction related experiments. For more information, please consult technical personnel.

Products Images



Western blot analysis of lysates from KB cells, primary antibody was diluted at 1:1000, 4° over night



Immunohistochemical analysis of paraffin-embedded human cervical carcinoma. 1, Antibody was diluted at 1:200(4° overnight). 2, Tris-EDTA, pH9.0 was used for antigen retrieval. 3, Secondary antibody was diluted at 1:200(room temperature, 45min).