

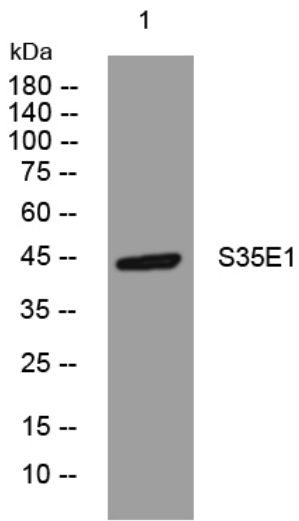


S35E1 rabbit pAb

Catalog No	YP-Ab-12057
Isotype	IgG
Reactivity	Human; Mouse;Rat
Applications	WB
Gene Name	SLC35E1 PSEC0038
Protein Name	S35E1
Immunogen	Synthesized peptide derived from human S35E1 AA range: 257-307
Specificity	This antibody detects endogenous levels of S35E1 at Human/Mouse/Rat
Formulation	Liquid in PBS containing 50% glycerol, 0.5% BSA and 0.02% sodium azide.
Source	Polyclonal, Rabbit,IgG
Purification	The antibody was affinity-purified from rabbit serum by affinity-chromatography using specific immunogen.
Dilution	WB 1: 500-2000
Concentration	1 mg/ml
Purity	≥90%
Storage Stability	-20°C/1 year
Synonyms	
Observed Band	
Cell Pathway	Membrane ; Multi-pass membrane protein .
Tissue Specificity	
Function	function:Putative transporter.,similarity:Belongs to the TPT transporter family. SLC35E subfamily.,
Background	
matters needing attention	Avoid repeated freezing and thawing!
Usage suggestions	This product can be used in immunological reaction related experiments. For more information, please consult technical personnel.



Products Images



Western blot analysis of lysates from SH-SY5Y cells,
primary antibody was diluted at 1:1000, 4° over night