

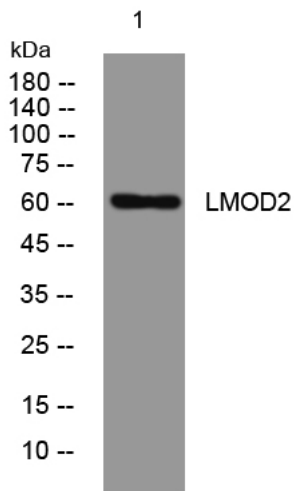


LMOD2 rabbit pAb

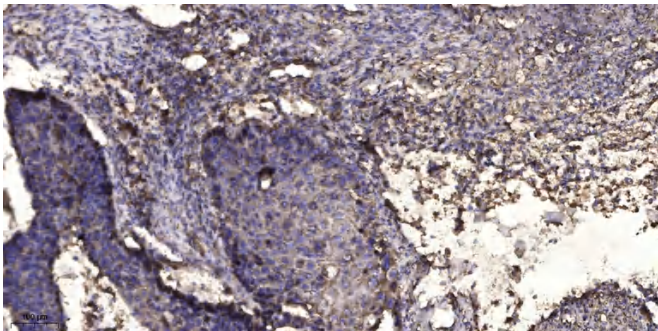
| | |
|----------------------------------|--|
| Catalog No | YP-Ab-12059 |
| Isotype | IgG |
| Reactivity | Human; Mouse;Rat |
| Applications | WB;ELISA;IHC |
| Gene Name | LMOD2 |
| Protein Name | LMOD2 |
| Immunogen | Synthesized peptide derived from human LMOD2 AA range: 279-329 |
| Specificity | This antibody detects endogenous levels of LMOD2 at Human/Mouse/Rat |
| Formulation | Liquid in PBS containing 50% glycerol, 0.5% BSA and 0.02% sodium azide. |
| Source | Polyclonal, Rabbit,IgG |
| Purification | The antibody was affinity-purified from rabbit serum by affinity-chromatography using specific immunogen. |
| Dilution | WB 1:500-2000;IHC-p 1:50-300; ELISA 2000-20000 |
| Concentration | 1 mg/ml |
| Purity | ≥90% |
| Storage Stability | -20°C/1 year |
| Synonyms | |
| Observed Band | |
| Cell Pathway | Cytoplasm, myofibril, sarcomere . Cytoplasm, myofibril . Cytoplasm, myofibril, sarcomere, M line . Cytoplasm, cytoskeleton . Colocalizes with actin filaments in sarcomeres. Detected close to the M line. . |
| Tissue Specificity | Specifically expressed in heart and skeletal muscles, with higher levels in heart (at protein level). Not expressed in other tissues. |
| Function | function:May block the elongation and depolymerization of the actin filaments at the pointed end.,sequence caution:Translation N-terminally shortened.,similarity:Belongs to the tropomodulin family.,similarity:Contains 1 WH2 domain.,subunit:Able to bind to tropomyosin.,tissue specificity:Specifically expressed in heart and skeletal muscles. Not expressed in other tissues., |
| Background | |
| matters needing attention | Avoid repeated freezing and thawing! |
| Usage suggestions | This product can be used in immunological reaction related experiments. For more information, please consult technical personnel. |



Products Images



Western blot analysis of lysates from DU145 cells, primary antibody was diluted at 1:1000, 4° over night



Immunohistochemical analysis of paraffin-embedded human Squamous cell carcinoma of lung. 1, Antibody was diluted at 1:200(4° overnight). 2, Tris-EDTA,pH9.0 was used for antigen retrieval. 3,Secondary antibody was diluted at 1:200(room temperature, 45min).