



AP4B1 rabbit pAb

Catalog No	YP-Ab-12085
Isotype	IgG
Reactivity	Human; Mouse
Applications	WB
Gene Name	AP4B1
Protein Name	AP4B1
Immunogen	Synthesized peptide derived from human AP4B1 AA range: 595-645
Specificity	This antibody detects endogenous levels of AP4B1 at Human/Mouse
Formulation	Liquid in PBS containing 50% glycerol, 0.5% BSA and 0.02% sodium azide.
Source	Polyclonal, Rabbit,IgG
Purification	The antibody was affinity-purified from rabbit serum by affinity-chromatography using specific immunogen.
Dilution	WB 1: 500-2000
Concentration	1 mg/ml
Purity	≥90%
Storage Stability	-20°C/1 year
Synonyms	
Observed Band	
Cell Pathway	Golgi apparatus, trans-Golgi network membrane ; Peripheral membrane protein .
Tissue Specificity	Widely expressed.
Function	function:Subunit of novel type of clathrin- or non-clathrin-associated protein coat involved in targeting proteins from the trans-Golgi network (TGN) to the endosomal-lysosomal system.,similarity:Belongs to the adaptor complexes large subunit family.,subcellular location:Associated with the trans-Golgi network. Found in soma and dendritic shafts of neuronal cells.,subunit:Adapter-like complex 4 (AP-4) is a heterotetramer composed of two large adaptins (epsilon-type subunit AP4E1 and beta-type subunit AP4B1), a medium adaptin (mu-type subunit AP4M1) and a small adaptin (sigma-type AP4S1).,tissue specificity:Widely expressed.,
Background	This gene encodes a subunit of a heterotetrameric adapter-like complex 4 that is involved in targeting proteins from the trans-Golgi network to the endosomal-lysosomal system. Mutations in this gene are associated with cerebral palsy spastic quadriplegic type 5 (CPSQ5) disorder. Alternatively spliced transcript variants encoding different isoforms have been found for this gene. [provided by RefSeq, Dec 2011],



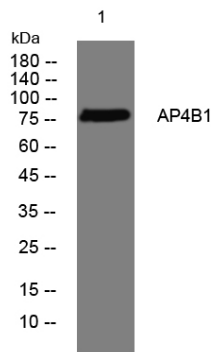
matters needing attention

Avoid repeated freezing and thawing!

Usage suggestions

This product can be used in immunological reaction related experiments. For more information, please consult technical personnel.

Products Images



Western blot analysis of lysates from HEK293 cells, primary antibody was diluted at 1:1000, 4° over night