



# HSF2B rabbit pAb

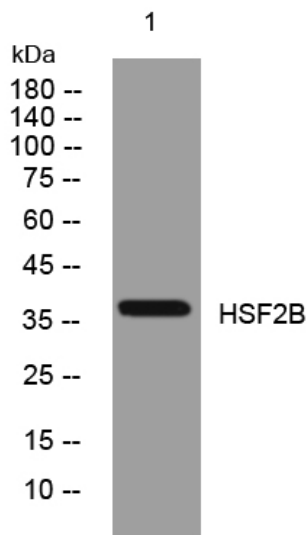
<b>Catalog No</b>	YP-Ab-12186
<b>Isotype</b>	IgG
<b>Reactivity</b>	Human;Rat;Mouse;
<b>Applications</b>	WB
<b>Gene Name</b>	HSF2BP
<b>Protein Name</b>	HSF2B
<b>Immunogen</b>	Synthesized peptide derived from human HSF2B AA range: 201-251
<b>Specificity</b>	This antibody detects endogenous levels of HSF2B at Human
<b>Formulation</b>	Liquid in PBS containing 50% glycerol, 0.5% BSA and 0.02% sodium azide.
<b>Source</b>	Polyclonal, Rabbit,IgG
<b>Purification</b>	The antibody was affinity-purified from rabbit serum by affinity-chromatography using specific immunogen.
<b>Dilution</b>	WB 1: 500-2000
<b>Concentration</b>	1 mg/ml
<b>Purity</b>	≥90%
<b>Storage Stability</b>	-20°C/1 year
<b>Synonyms</b>	
<b>Observed Band</b>	
<b>Cell Pathway</b>	Cytoplasm . Chromosome . Localizes on double-strand breaks (DSBs) in mitotic and meiotic chromosomes. .
<b>Tissue Specificity</b>	Testis specific. Overexpressed in some tumors (PubMed:31242413).
<b>Function</b>	function:May be involved in modulating HSF2 activation in testis.,PTM:Sumoylated by UBE2I in response to MEKK1-mediated stimuli.,subunit:Associates with HSF2. The interaction seems to occur between the trimerization domain of HSF2 and the N-terminal hydrophilic region of HSF2BP.,tissue specificity:Testis specific.,
<b>Background</b>	HSF2 binding protein (HSF2BP) associates with HSF2. The interaction occurs between the trimerization domain of HSF2 and the amino terminal hydrophilic region of HSF2BP that comprises two leucine zipper motifs. HSF2BP may therefore be involved in modulating HSF2 activation. [provided by RefSeq, Jul 2008],
<b>matters needing attention</b>	Avoid repeated freezing and thawing!



### Usage suggestions

This product can be used in immunological reaction related experiments. For more information, please consult technical personnel.

## Products Images



Western blot analysis of lysates from 293T cells, primary antibody was diluted at 1:1000, 4° over night