

TM199 rabbit pAb

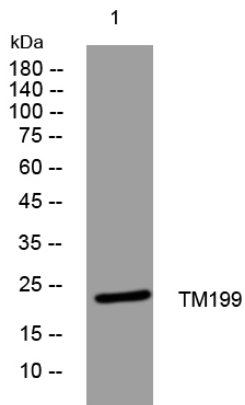
Catalog No	YP-Ab-12210
Isotype	IgG
Reactivity	Human; Mouse;Rat
Applications	WB
Gene Name	TMEM199 C17orf32
Protein Name	TM199
Immunogen	Synthesized peptide derived from human TM199 AA range: 38-88
Specificity	This antibody detects endogenous levels of TM199 at Human/Mouse/Rat
Formulation	Liquid in PBS containing 50% glycerol, 0.5% BSA and 0.02% sodium azide.
Source	Polyclonal, Rabbit,IgG
Purification	The antibody was affinity-purified from rabbit serum by affinity-chromatography using specific immunogen.
Dilution	WB 1: 500-2000
Concentration	1 mg/ml
Purity	≥90%
Storage Stability	-20°C/1 year
Synonyms	
Observed Band	
Cell Pathway	Cytoplasmic vesicle, COPI-coated vesicle membrane ; Multi-pass membrane protein . Endoplasmic reticulum-Golgi intermediate compartment membrane ; Multi-pass membrane protein . Endoplasmic reticulum membrane ; Multi-pass membrane protein . Partial colocalization with GOLGB1. .
Tissue Specificity	
Function	
Background	The protein encoded by this gene has been observed to localize to the endoplasmic reticulum (ER)-Golgi intermediate compartment (ERGIC) and coat protein complex I (COPI) in some human cells. The encoded protein shares some homology with the yeast protein Vma12. Defects in this gene are a cause of congenital disorder of glycosylation, type IIp. [provided by RefSeq, Mar 2016],
matters needing attention	Avoid repeated freezing and thawing!



Usage suggestions

This product can be used in immunological reaction related experiments. For more information, please consult technical personnel.

Products Images



Western blot analysis of lysates from U2OS cells, primary antibody was diluted at 1:1000, 4° over night