

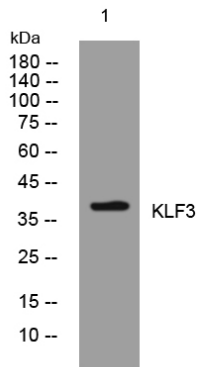


KLF3 rabbit pAb

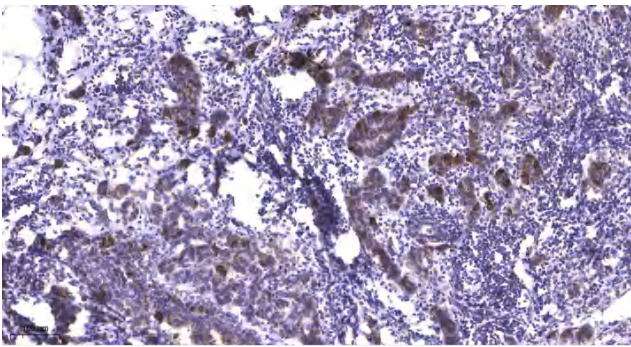
Catalog No	YP-Ab-12218
Isotype	IgG
Reactivity	Human; Mouse
Applications	WB;ELISA;IHC
Gene Name	KLF3 BKLF
Protein Name	KLF3
Immunogen	Synthesized peptide derived from human KLF3 AA range: 51-101
Specificity	This antibody detects endogenous levels of KLF3 at Human/Mouse
Formulation	Liquid in PBS containing 50% glycerol, 0.5% BSA and 0.02% sodium azide.
Source	Polyclonal, Rabbit,IgG
Purification	The antibody was affinity-purified from rabbit serum by affinity-chromatography using specific immunogen.
Dilution	WB 1:500-2000;IHC-p 1:50-300; ELISA 2000-20000
Concentration	1 mg/ml
Purity	≥90%
Storage Stability	-20°C/1 year
Synonyms	
Observed Band	
Cell Pathway	Nucleus .
Tissue Specificity	
Function	function: Binds to the CACCC box of erythroid cell-expressed genes. May play a role in hematopoiesis.,PTM: Sumoylated by SUMO1. Sumoylation is enhanced by PIAS1, PIAS2alpha and PIAS2beta, and PIAS4, but not by Pc2. Enhances transcriptional repression, but has no effect on DNA binding. Sumoylation on Lys-198 is the major site.,similarity: Belongs to the krueppel C2H2-type zinc-finger protein family.,similarity: Contains 3 C2H2-type zinc fingers.,subunit: Monomer.,
Background	
matters needing attention	Avoid repeated freezing and thawing!
Usage suggestions	This product can be used in immunological reaction related experiments. For more information, please consult technical personnel.



Products Images



Western blot analysis of lysates from A431 cells, primary antibody was diluted at 1:1000, 4° over night



Immunohistochemical analysis of paraffin-embedded human Breast cancer. 1, Antibody was diluted at 1:200(4° overnight). 2, Tris-EDTA,pH9.0 was used for antigen retrieval. 3,Secondary antibody was diluted at 1:200(room temperature, 45min).