



# UBP18 rabbit pAb

<b>Catalog No</b>	YP-Ab-12225
<b>Isotype</b>	IgG
<b>Reactivity</b>	Human; Mouse
<b>Applications</b>	WB
<b>Gene Name</b>	USP18 ISG43
<b>Protein Name</b>	UBP18
<b>Immunogen</b>	Synthesized peptide derived from human UBP18 AA range: 66-116
<b>Specificity</b>	This antibody detects endogenous levels of UBP18 at Human/Mouse
<b>Formulation</b>	Liquid in PBS containing 50% glycerol, 0.5% BSA and 0.02% sodium azide.
<b>Source</b>	Polyclonal, Rabbit,IgG
<b>Purification</b>	The antibody was affinity-purified from rabbit serum by affinity-chromatography using specific immunogen.
<b>Dilution</b>	WB 1: 500-2000
<b>Concentration</b>	1 mg/ml
<b>Purity</b>	≥90%
<b>Storage Stability</b>	-20°C/1 year
<b>Synonyms</b>	
<b>Observed Band</b>	
<b>Cell Pathway</b>	[Isoform 1]: Cytoplasm .; [Isoform 2]: Nucleus . Cytoplasm .
<b>Tissue Specificity</b>	
<b>Function</b>	catalytic activity:ISG15 C-terminal thiolester + H(2)O = ISG15 + a thiol.,catalytic activity:Ubiquitin C-terminal thioester + H(2)O = ubiquitin + a thiol.,function:Can efficiently cleave only ISG15 fusions including native ISG15 conjugates linked via isopeptide bonds. Necessary to maintain a critical cellular balance of ISG15-conjugated proteins in both healthy and stressed organisms.,similarity:Belongs to the peptidase C19 family.,
<b>Background</b>	The protein encoded by this gene belongs to the ubiquitin-specific proteases (UBP) family of enzymes that cleave ubiquitin from ubiquitinated protein substrates. It is highly expressed in liver and thymus, and is localized to the nucleus. This protein efficiently cleaves only ISG15 (a ubiquitin-like protein) fusions, and deletion of this gene in mice results in a massive increase of ISG15 conjugates in tissues, indicating that this protein is a major ISG15-specific protease. Mice lacking this gene are also hypersensitive to interferon, suggesting a function of this protein in downregulating interferon responses, independent of its isopeptidase activity towards ISG15. [provided by RefSeq, Sep 2011],



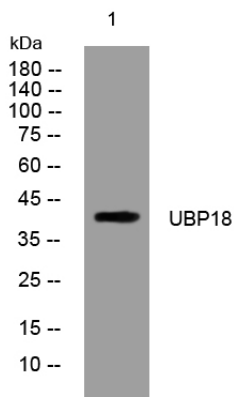
**matters needing attention**

Avoid repeated freezing and thawing!

**Usage suggestions**

This product can be used in immunological reaction related experiments. For more information, please consult technical personnel.

**Products Images**



Western blot analysis of lysates from THP-1 cells, primary antibody was diluted at 1:1000, 4° over night