



PEX5R rabbit pAb

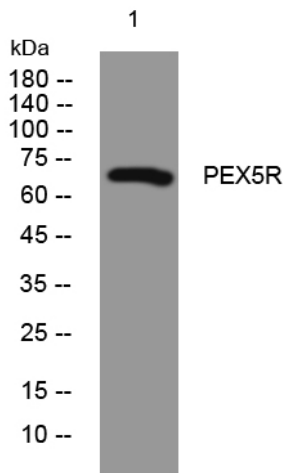
| | |
|----------------------------------|--|
| Catalog No | YP-Ab-12268 |
| Isotype | IgG |
| Reactivity | Human; Mouse;Rat |
| Applications | WB;IHC |
| Gene Name | PEX5L PEX5R PXR2 |
| Protein Name | PEX5R |
| Immunogen | Synthesized peptide derived from human PEX5R AA range: 267-317 |
| Specificity | This antibody detects endogenous levels of PEX5R at Human/Mouse/Rat |
| Formulation | Liquid in PBS containing 50% glycerol, 0.5% BSA and 0.02% sodium azide. |
| Source | Polyclonal, Rabbit,IgG |
| Purification | The antibody was affinity-purified from rabbit serum by affinity-chromatography using specific immunogen. |
| Dilution | WB 1:500-2000;IHC-p 1:50-300 |
| Concentration | 1 mg/ml |
| Purity | ≥90% |
| Storage Stability | -20°C/1 year |
| Synonyms | |
| Observed Band | |
| Cell Pathway | Cytoplasm . Membrane ; Peripheral membrane protein . Some fraction is membrane associated via its interaction with RAB8B. . |
| Tissue Specificity | Mainly expressed in brain. Also expressed in pancreas, testis and pituitary. |
| Function | similarity:Belongs to the peroxisomal targeting signal receptor family.,similarity:Contains 5 TPR repeats.,subcellular location:Some fraction is membrane associated via its interaction with RAB8B.,subunit:Interacts with RAB8B (By similarity). May interact with the C-terminal PTS1-type tripeptide peroxisomal targeting signal (SKL-type); the relevance of such interaction is however unclear.,tissue specificity:Mainly expressed in brain. Also expressed in pancreas, testis and pituitary., |
| Background | |
| matters needing attention | Avoid repeated freezing and thawing! |



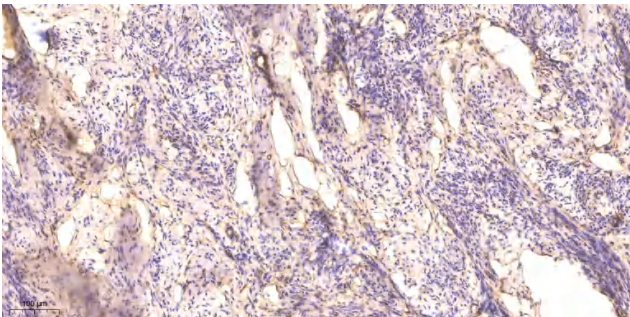
Usage suggestions

This product can be used in immunological reaction related experiments. For more information, please consult technical personnel.

Products Images



Western blot analysis of lysates from HeLa cells, primary antibody was diluted at 1:1000, 4° over night



Immunohistochemical analysis of paraffin-embedded human cervical carcinoma. 1, Antibody was diluted at 1:200(4° overnight). 2, Tris-EDTA,pH9.0 was used for antigen retrieval. 3,Secondary antibody was diluted at 1:200(room temperature, 45min).