



## FBX17 rabbit pAb

<b>Catalog No</b>	YP-Ab-12271
<b>Isotype</b>	IgG
<b>Reactivity</b>	Human; Mouse;Rat
<b>Applications</b>	WB
<b>Gene Name</b>	FBXO17 FBG4 FBX17 FBX26 FBXO26
<b>Protein Name</b>	FBX17
<b>Immunogen</b>	Synthesized peptide derived from human FBX17 AA range: 61-111
<b>Specificity</b>	This antibody detects endogenous levels of FBX17 at Human/Mouse/Rat
<b>Formulation</b>	Liquid in PBS containing 50% glycerol, 0.5% BSA and 0.02% sodium azide.
<b>Source</b>	Polyclonal, Rabbit,IgG
<b>Purification</b>	The antibody was affinity-purified from rabbit serum by affinity-chromatography using specific immunogen.
<b>Dilution</b>	WB 1: 500-2000
<b>Concentration</b>	1 mg/ml
<b>Purity</b>	≥90%
<b>Storage Stability</b>	-20°C/1 year
<b>Synonyms</b>	
<b>Observed Band</b>	
<b>Cell Pathway</b>	SCF ubiquitin ligase complex,
<b>Tissue Specificity</b>	Expressed in heart, skeletal muscle, liver and kidney. Expressed at lower levels in spleen and brain.
<b>Function</b>	function:Substrate-recognition component of the SCF (SKP1-CUL1-F-box protein)-type E3 ubiquitin ligase complex.,similarity:Contains 1 F-box domain.,similarity:Contains 1 FBA (F-box associated) domain.,subunit:Directly interacts with SKP1A and CUL1.,tissue specificity:Expressed in heart, skeletal muscle, liver and kidney. Expressed at lower levels in spleen and brain.,
<b>Background</b>	This gene encodes a member of the F-box protein family which is characterized by the F-box motif. The F-box proteins constitute one of the four subunits of the ubiquitin protein ligase complex called SCFs (SKP1-cullin-F-box), which function in phosphorylation-dependent ubiquitination. The F-box proteins are divided into 3 classes: Fbws containing WD-40 domains, Fbls containing leucine-rich repeats, and Fbxs containing either different protein-protein interaction modules or no recognizable motifs. The protein encoded by this gene belongs to the Fbxs class and it contains an F-box domain. Alternative splicing results in multiple transcript variants. [provided by RefSeq, Jul 2013],



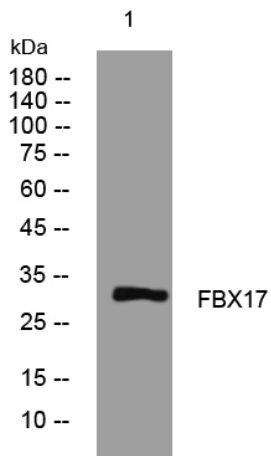
**matters needing attention**

Avoid repeated freezing and thawing!

**Usage suggestions**

This product can be used in immunological reaction related experiments. For more information, please consult technical personnel.

**Products Images**



Western blot analysis of lysates from MCF-7 cells, primary antibody was diluted at 1:1000, 4° over night