



ROMO1 rabbit pAb

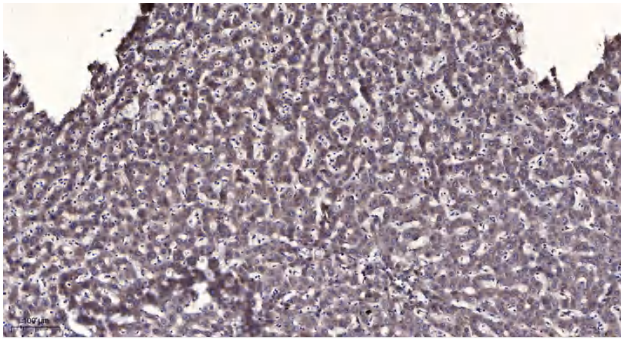
| | |
|----------------------------------|--|
| Catalog No | YP-Ab-12279 |
| Isotype | IgG |
| Reactivity | Human; Mouse |
| Applications | IHC;IF |
| Gene Name | ROMO1 C20orf52 |
| Protein Name | ROMO1 |
| Immunogen | Synthesized peptide derived from human ROMO1 AA range: 17-67 |
| Specificity | This antibody detects endogenous levels of ROMO1 at Human/Mouse |
| Formulation | Liquid in PBS containing 50% glycerol, 0.5% BSA and 0.02% sodium azide. |
| Source | Polyclonal, Rabbit,IgG |
| Purification | The antibody was affinity-purified from rabbit serum by affinity-chromatography using specific immunogen. |
| Dilution | IHC-p 1: 50-200. IF 1:50-200 |
| Concentration | 1 mg/ml |
| Purity | ≥90% |
| Storage Stability | -20°C/1 year |
| Synonyms | |
| Observed Band | |
| Cell Pathway | Mitochondrion inner membrane ; Single-pass membrane protein . |
| Tissue Specificity | Up-regulated in a number of cancer cell lines when compared to a normal lung fibroblast cell line. Highly expressed in brain tumors. |
| Function | developmental stage:Expression increases in senescent cells.,function:Induces production of reactive oxygen species (ROS) which are necessary for cell proliferation. May play a role in inducing oxidative DNA damage and replicative senescence.,induction:By the anticancer drug fluorouracil (5FU).,miscellaneous:Enforced expression in IMR-90 cells leads to increased levels of ROS and induces premature cell senescence and nuclear DNA damage.,similarity:Belongs to the MGR2 family.,tissue specificity:Up-regulated in a number of cancer cell lines when compared to a normal lung fibroblast cell line., |
| Background | The protein encoded by this gene is a mitochondrial membrane protein that is responsible for increasing the level of reactive oxygen species (ROS) in cells. The protein also has antimicrobial activity against a variety of bacteria by inducing bacterial membrane breakage. [provided by RefSeq, Nov 2014], |
| matters needing attention | Avoid repeated freezing and thawing! |



Usage suggestions

This product can be used in immunological reaction related experiments. For more information, please consult technical personnel.

Products Images



Immunohistochemical analysis of paraffin-embedded human liver cancer. 1, Antibody was diluted at 1:200(4° overnight). 2, Tris-EDTA,pH9.0 was used for antigen retrieval. 3,Secondary antibody was diluted at 1:200(room temperature, 45min).