



MPP2 rabbit pAb

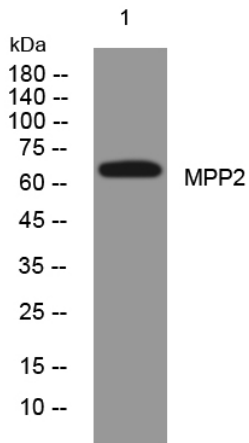
Catalog No	YP-Ab-12319
Isotype	IgG
Reactivity	Human; Mouse
Applications	WB;IHC
Gene Name	MPP2 DLG2
Protein Name	MPP2
Immunogen	Synthesized peptide derived from human MPP2 AA range: 439-489
Specificity	This antibody detects endogenous levels of MPP2 at Human/Mouse
Formulation	Liquid in PBS containing 50% glycerol, 0.5% BSA and 0.02% sodium azide.
Source	Polyclonal, Rabbit,IgG
Purification	The antibody was affinity-purified from rabbit serum by affinity-chromatography using specific immunogen.
Dilution	WB 1:500-2000;IHC-p 1:50-300
Concentration	1 mg/ml
Purity	≥90%
Storage Stability	-20°C/1 year
Synonyms	
Observed Band	
Cell Pathway	Cytoplasm, cytoskeleton . Membrane . Cell projection, dendrite . Cell junction, synapse, postsynaptic density . Prominently expressed in the postsynaptic densities of dendritic spines, is also detected in dendritic shafts. .
Tissue Specificity	
Function	similarity:Belongs to the MAGUK family.,similarity:Contains 1 guanylate kinase-like domain.,similarity:Contains 1 PDZ (DHR) domain.,similarity:Contains 1 SH3 domain.,similarity:Contains 2 L27 domains.,
Background	Palmitoylated membrane protein 2 is a member of a family of membrane-associated proteins termed MAGUKs (membrane-associated guanylate kinase homologs). MAGUKs interact with the cytoskeleton and regulate cell proliferation, signaling pathways, and intracellular junctions. Palmitoylated membrane protein 2 contains a conserved sequence, called the SH3 (src homology 3) motif, found in several other proteins that associate with the cytoskeleton and are suspected to play important roles in signal transduction. [provided by RefSeq, Jul 2008],
matters needing attention	Avoid repeated freezing and thawing!



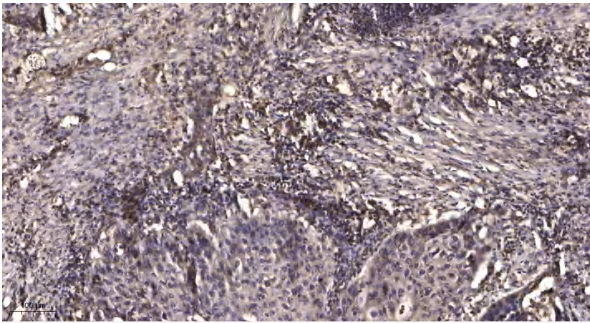
Usage suggestions

This product can be used in immunological reaction related experiments. For more information, please consult technical personnel.

Products Images



Western blot analysis of lysates from SH-SY5Y cells, primary antibody was diluted at 1:1000, 4° overnight



Immunohistochemical analysis of paraffin-embedded human Squamous cell carcinoma of lung. 1, Antibody was diluted at 1:200(4° overnight). 2, Tris-EDTA,pH9.0 was used for antigen retrieval. 3,Secondary antibody was diluted at 1:200(room temperature, 45min).