



## DUX3 rabbit pAb

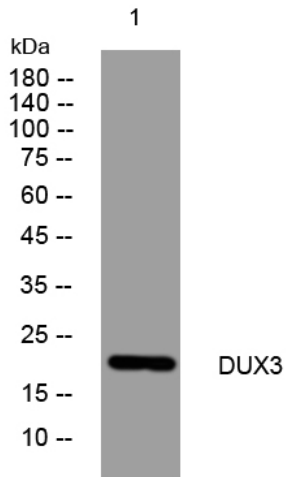
<b>Catalog No</b>	YP-Ab-12370
<b>Isotype</b>	IgG
<b>Reactivity</b>	Human;Rat;Mouse;
<b>Applications</b>	WB
<b>Gene Name</b>	DUX3
<b>Protein Name</b>	DUX3
<b>Immunogen</b>	Synthesized peptide derived from human DUX3 AA range: 27-77
<b>Specificity</b>	This antibody detects endogenous levels of DUX3 at Human
<b>Formulation</b>	Liquid in PBS containing 50% glycerol, 0.5% BSA and 0.02% sodium azide.
<b>Source</b>	Polyclonal, Rabbit,IgG
<b>Purification</b>	The antibody was affinity-purified from rabbit serum by affinity-chromatography using specific immunogen.
<b>Dilution</b>	WB 1: 500-2000
<b>Concentration</b>	1 mg/ml
<b>Purity</b>	≥90%
<b>Storage Stability</b>	-20°C/1 year
<b>Synonyms</b>	
<b>Observed Band</b>	
<b>Cell Pathway</b>	Nucleus .
<b>Tissue Specificity</b>	Expressed in hepatoma Hep3B cells.
<b>Function</b>	developmental stage:Expressed in fetal tissue.,miscellaneous:DUX genes are present in 3.3-kilobase elements, a tandem repeat family scattered in the genome found on the short arms of all acrocentric chromosomes as well as on several other chromosomes. May be functional despite lack of introns and of a poly(A) addition signal.,similarity:Belongs to the paired homeobox family.,similarity:Contains 2 homeobox DNA-binding domains.,tissue specificity:Expressed in hepatoma Hep3B cells.,
<b>Background</b>	The human genome contains hundreds of repeats of the 3.3-kb family in regions associated with heterochromatin. The DUX gene family, including DUX3, resides within these 3.3-kb repeated elements (Beckers et al., 2001 [PubMed 11245978]). See DUX4 (MIM 606009).[supplied by OMIM, Mar 2008],
<b>matters needing attention</b>	Avoid repeated freezing and thawing!



### Usage suggestions

This product can be used in immunological reaction related experiments. For more information, please consult technical personnel.

## Products Images



Western blot analysis of lysates from K562 cells,  
primary antibody was diluted at 1:1000, 4° over night