



MDSP rabbit pAb

Catalog No	YP-Ab-12375
Isotype	IgG
Reactivity	Human; Mouse
Applications	WB
Gene Name	DUSP13 BEDP MDSP
Protein Name	MDSP
Immunogen	Synthesized peptide derived from human MDSP AA range: 48-98
Specificity	This antibody detects endogenous levels of MDSP at Human/Mouse
Formulation	Liquid in PBS containing 50% glycerol, 0.5% BSA and 0.02% sodium azide.
Source	Polyclonal, Rabbit,IgG
Purification	The antibody was affinity-purified from rabbit serum by affinity-chromatography using specific immunogen.
Dilution	WB 1: 500-2000
Concentration	1 mg/ml
Purity	≥90%
Storage Stability	-20°C/1 year
Synonyms	
Observed Band	
Cell Pathway	Cytoplasm .
Tissue Specificity	Skeletal muscle specific.
Function	catalytic activity:A phosphoprotein + H(2)O = a protein + phosphate.,catalytic activity:Protein tyrosine phosphate + H(2)O = protein tyrosine + phosphate.,function:May be involved in the regulation of meiosis and/or differentiation of testicular germ cells during spermatogenesis. Exhibits intrinsic phosphatase activity towards both phospho-seryl/threonyl and -tyrosyl residues of myelin basic protein, with similar specific activities in vitro.,similarity:Belongs to the protein-tyrosine phosphatase family. Non-receptor class dual specificity subfamily.,similarity:Contains 1 tyrosine-protein phosphatase domain.,tissue specificity:Most abundantly expressed in the testis.,
Background	Members of the protein-tyrosine phosphatase superfamily cooperate with protein kinases to regulate cell proliferation and differentiation. This superfamily is separated into two families based on the substrate that is dephosphorylated. One family, the dual specificity phosphatases (DSPs) acts on both phosphotyrosine and phosphoserine/threonine residues. This gene encodes different but related DSP proteins through the use of non-overlapping open reading frames, alternate



splicing, and presumed different transcription promoters. Expression of the distinct proteins from this gene has been found to be tissue specific and the proteins may be involved in postnatal development of specific tissues. A protein encoded by the upstream ORF was found in skeletal muscle, whereas the encoded protein from the downstream ORF was found only in testis. In mouse, a similar pattern of expression was found. Multiple alternatively spliced transcript variants were described, but the full-length sequence of only some were determined. [provided by RefSeq, Jul 2008],

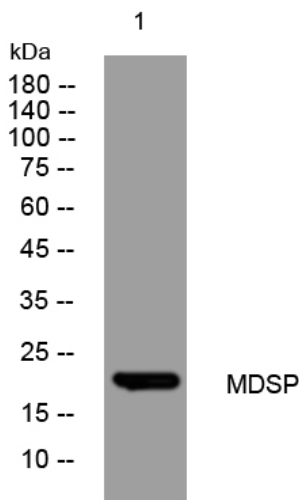
matters needing attention

Avoid repeated freezing and thawing!

Usage suggestions

This product can be used in immunological reaction related experiments. For more information, please consult technical personnel.

Products Images



Western blot analysis of lysates from U2OS cells, primary antibody was diluted at 1:1000, 4° over night