

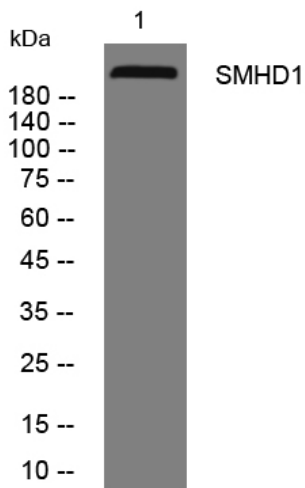


SMHD1 rabbit pAb

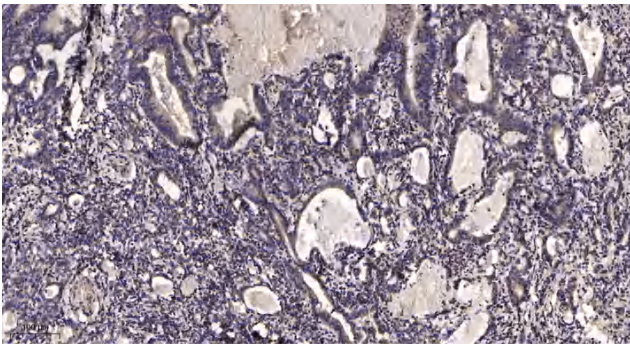
Catalog No	YP-Ab-12388
Isotype	IgG
Reactivity	Human; Mouse
Applications	WB;IHC
Gene Name	SMCHD1 KIAA0650
Protein Name	SMHD1
Immunogen	Synthesized peptide derived from human SMHD1 AA range: 1480-1530
Specificity	This antibody detects endogenous levels of SMHD1 at Human/Mouse
Formulation	Liquid in PBS containing 50% glycerol, 0.5% BSA and 0.02% sodium azide.
Source	Polyclonal, Rabbit,IgG
Purification	The antibody was affinity-purified from rabbit serum by affinity-chromatography using specific immunogen.
Dilution	WB 1:500-2000;IHC-p 1:50-300
Concentration	1 mg/ml
Purity	≥90%
Storage Stability	-20°C/1 year
Synonyms	
Observed Band	
Cell Pathway	Chromosome . Recruited to inactivated chromosome X in females by Xist RNA (By similarity). Localizes at sites of DNA damage at double-strand breaks (DSBs) (PubMed:25294876, PubMed:24790221). .
Tissue Specificity	
Function	
Background	This gene encodes a protein which contains a hinge region domain found in members of the SMC (structural maintenance of chromosomes) protein family. [provided by RefSeq, Dec 2011],
matters needing attention	Avoid repeated freezing and thawing!
Usage suggestions	This product can be used in immunological reaction related experiments. For more information, please consult technical personnel.



Products Images



Western blot analysis of lysates from MCF-7 cells, primary antibody was diluted at 1:1000, 4° over night



Immunohistochemical analysis of paraffin-embedded human Gastric adenocarcinoma. 1, Antibody was diluted at 1:200(4° overnight). 2, Tris-EDTA,pH9.0 was used for antigen retrieval. 3,Secondary antibody was diluted at 1:200(room temperature, 45min).