

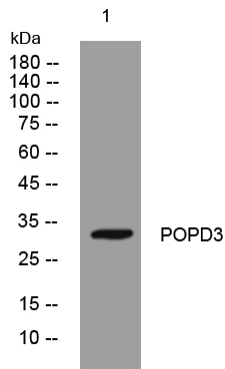


POPD3 rabbit pAb

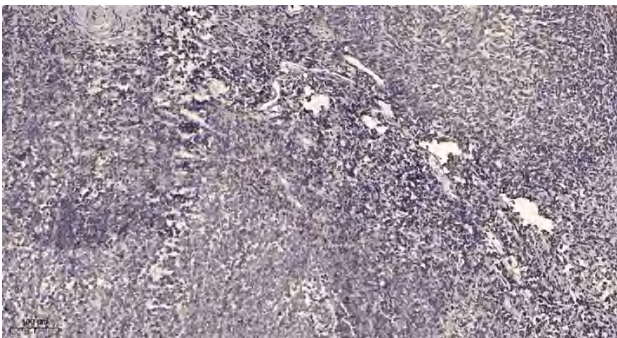
Catalog No	YP-Ab-12407
Isotype	IgG
Reactivity	Human; Mouse
Applications	WB;IHC
Gene Name	POPDC3 POP3
Protein Name	POPD3
Immunogen	Synthesized peptide derived from human POPD3 AA range: 111-161
Specificity	This antibody detects endogenous levels of POPD3 at Human/Mouse
Formulation	Liquid in PBS containing 50% glycerol, 0.5% BSA and 0.02% sodium azide.
Source	Polyclonal, Rabbit,IgG
Purification	The antibody was affinity-purified from rabbit serum by affinity-chromatography using specific immunogen.
Dilution	WB 1:500-2000;IHC-p 1:50-300
Concentration	1 mg/ml
Purity	≥90%
Storage Stability	-20°C/1 year
Synonyms	
Observed Band	
Cell Pathway	Membrane ; Multi-pass membrane protein .
Tissue Specificity	Expressed predominantly in skeletal muscle (at protein level) (PubMed:10882522, PubMed:31610034). Also detected in heart (PubMed:10882522).
Function	function:May play an important role in heart development.,similarity:Belongs to the popeye family.,tissue specificity:Expressed predominantly in skeletal muscle and detected in heart.,
Background	This gene encodes a member of the POP family of proteins containing three putative transmembrane domains. This gene is expressed in cardiac and skeletal muscle and may play an important role in these tissues during development. Alternatively spliced transcript variants have been found. [provided by RefSeq, Nov 2008],
matters needing attention	Avoid repeated freezing and thawing!
Usage suggestions	This product can be used in immunological reaction related experiments. For more information, please consult technical personnel.



Products Images



Western blot analysis of lysates from PC-12 cells, primary antibody was diluted at 1:1000, 4° over night



Immunohistochemical analysis of paraffin-embedded human tonsil. 1, Antibody was diluted at 1:200(4° overnight). 2, Tris-EDTA, pH9.0 was used for antigen retrieval. 3, Secondary antibody was diluted at 1:200(room temperature, 45min).