



Cleaved-Aggrecan (D369) Polyclonal Antibody

Catalog No	YP-Ab-12598
Isotype	IgG
Reactivity	Human;Rat
Applications	WB;IHC;IF;ELISA
Gene Name	ACAN
Protein Name	Aggrecan core protein
Immunogen	The antiserum was produced against synthesized peptide derived from human Aggrecan. AA range:320-369
Specificity	Cleaved-Aggrecan (D369) Polyclonal Antibody detects endogenous levels of fragment of activated Aggrecan protein resulting from cleavage adjacent to D369.
Formulation	Liquid in PBS containing 50% glycerol, 0.5% BSA and 0.02% sodium azide.
Source	Polyclonal, Rabbit,IgG
Purification	The antibody was affinity-purified from rabbit antiserum by affinity-chromatography using epitope-specific immunogen.
Dilution	WB: 1/500 - 1/2000. IHC: 1/100 - 1/300. ELISA: 1/20000.. IF 1:50-200
Concentration	1 mg/ml
Purity	≥90%
Storage Stability	-20°C/1 year
Synonyms	ACAN; AGC1; CSPG1; MSK16; Aggrecan core protein; Cartilage-specific proteoglycan core protein; CSPCP; Chondroitin sulfate proteoglycan core protein 1; Chondroitin sulfate proteoglycan 1
Observed Band	44kD
Cell Pathway	Secreted, extracellular space, extracellular matrix .
Tissue Specificity	Restricted to cartilages.
Function	alternative products:Additional isoforms seem to exist,developmental stage:Expression was detected in chondrocytes throughout the developing skeleton.,disease:Defects in ACAN are the cause of spondyloepiphyseal dysplasia type Kimberley (SEDK) [MIM:608361]. Spondyloepiphyseal dysplasias are a heterogeneous group of congenital chondrodysplasias that specifically affect epiphyses and vertebrae. The autosomal dominant SEDK is associated with premature degenerative arthropathy.,domain:Two globular domains, G1 and G2, comprise the N-terminus of the proteoglycan, while another globular region, G3, makes up the C-terminus. G1 contains Link domains and thus consists of three disulfide-bonded loop structures designated as the A, B, B' motifs. G2 is similar to G1. The keratan sulfate (KS) and the chondroitin sulfate (CS) attachment domains lie between G2 and G3.,function:This proteoglycan is a major



Background

This gene is a member of the aggrecan/versican proteoglycan family. The encoded protein is an integral part of the extracellular matrix in cartilagenous tissue and it withstands compression in cartilage. Mutations in this gene may be involved in skeletal dysplasia and spinal degeneration. Multiple alternatively spliced transcript variants that encode different protein isoforms have been observed in this gene. [provided by RefSeq, Jul 2008],

matters needing attention

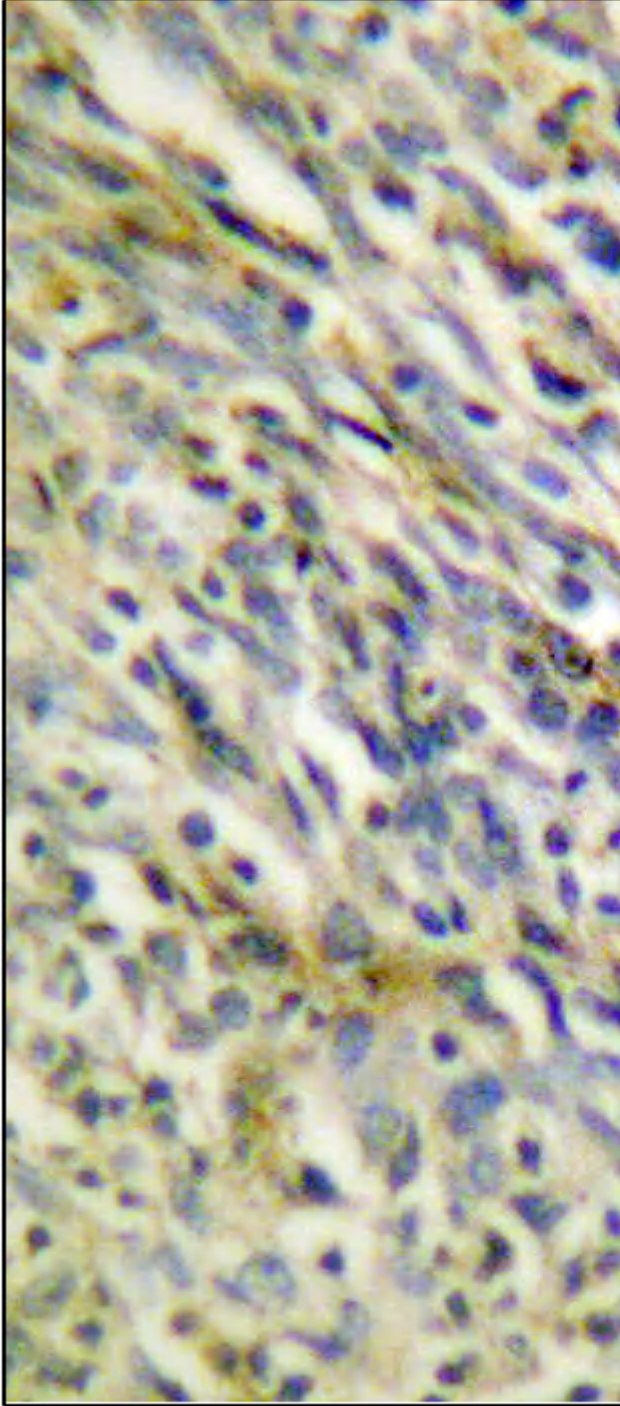
Avoid repeated freezing and thawing!

Usage suggestions

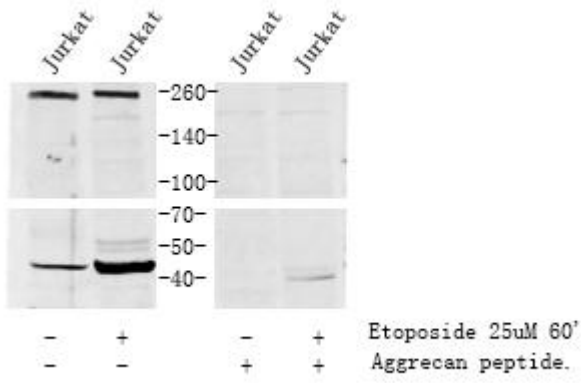
This product can be used in immunological reaction related experiments. For more information, please consult technical personnel.



Products Images



Immunohistochemistry analysis of paraffin-embedded human lung carcinoma tissue, using Aggrecan (Cleaved-Asp369) Antibody. The picture on the right is blocked with the synthesized peptide.



Western blot analysis of lysates from Jurkat cells, treated with Etoposide 25uM 60', using Aggrecan (Cleaved-Asp369) Antibody. The lane on the right is blocked with the synthesized peptide.
