

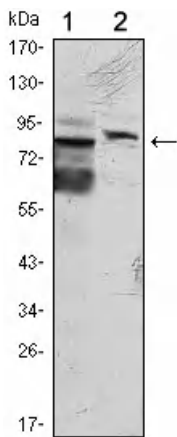


# KLHL11 Monoclonal Antibody

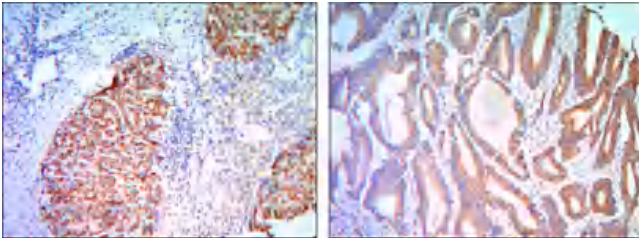
<b>Catalog No</b>	YP-Ab-12606
<b>Isotype</b>	IgG
<b>Reactivity</b>	Human
<b>Applications</b>	WB;IHC;IF;ELISA
<b>Gene Name</b>	KLHL11
<b>Protein Name</b>	Kelch-like protein 11
<b>Immunogen</b>	Purified recombinant fragment of human KLHL11 expressed in E. Coli.
<b>Specificity</b>	KLHL11 Monoclonal Antibody detects endogenous levels of KLHL11 protein.
<b>Formulation</b>	Ascitic fluid containing 0.03% sodium azide,0.5% BSA, 50%glycerol.
<b>Source</b>	Monoclonal, Mouse
<b>Purification</b>	Affinity purification
<b>Dilution</b>	Western Blot: 1/500 - 1/2000. Immunohistochemistry: 1/200 - 1/1000. Immunofluorescence: 1/200 - 1/1000. ELISA: 1/10000. Not yet tested in other applications.
<b>Concentration</b>	1 mg/ml
<b>Purity</b>	≥90%
<b>Storage Stability</b>	-20°C/1 year
<b>Synonyms</b>	KLHL11; Kelch-like protein 11
<b>Observed Band</b>	
<b>Cell Pathway</b>	cytoplasm,SCF ubiquitin ligase complex,
<b>Tissue Specificity</b>	Testis,
<b>Function</b>	similarity:Contains 1 BACK (BTB/Kelch associated) domain.,similarity:Contains 1 BTB (POZ) domain.,similarity:Contains 5 Kelch repeats.,
<b>Background</b>	similarity:Contains 1 BACK (BTB/Kelch associated) domain.,similarity:Contains 1 BTB (POZ) domain.,similarity:Contains 5 Kelch repeats.,
<b>matters needing attention</b>	Avoid repeated freezing and thawing!
<b>Usage suggestions</b>	This product can be used in immunological reaction related experiments. For more information, please consult technical personnel.



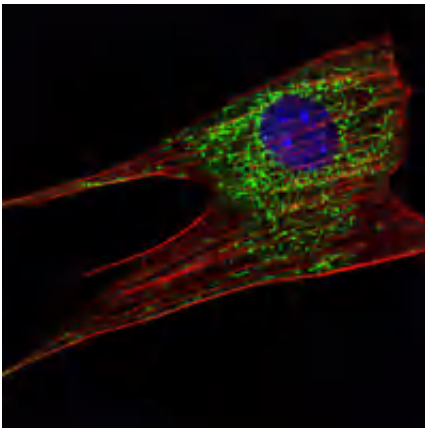
## Products Images



Western Blot analysis using KLHL11 Monoclonal Antibody against HeLa (1) and MCF-7 (2) cell lysate.



Immunohistochemistry analysis of paraffin-embedded liver cancer (right) and colon cancer tissues (left) with DAB staining using KLHL11 Monoclonal Antibody.



Immunofluorescence analysis of NIH/3T3 cells using KLHL11 Monoclonal Antibody (green). Blue: DRAQ5 fluorescent DNA dye. Red: Actin filaments have been labeled with Alexa Fluor-555 phalloidin.