



KLHL13 Monoclonal Antibody

| | |
|---------------------------|--------------------------------------------------------------------------------------------------------------------------------------------------------------------------------------------------------------------------------------------------------------------------------------------------------------------------------------------------------------------------------------------------------------------------------------------------------------------------------------------------------------------------------------------------------|
| Catalog No | YP-Ab-12608 |
| Isotype | IgG |
| Reactivity | Human |
| Applications | WB;IHC;IF;FCM;ELISA |
| Gene Name | KLHL13 |
| Protein Name | Kelch-like protein 13 |
| Immunogen | Purified recombinant fragment of human KLHL13 expressed in E. Coli. |
| Specificity | KLHL13 Monoclonal Antibody detects endogenous levels of KLHL13 protein. |
| Formulation | Ascitic fluid containing 0.03% sodium azide,0.5% BSA, 50%glycerol. |
| Source | Monoclonal, Mouse |
| Purification | Affinity purification |
| Dilution | Western Blot: 1/500 - 1/2000. Immunohistochemistry: 1/200 - 1/1000. Immunofluorescence: 1/200 - 1/1000. Flow cytometry: 1/200 - 1/400. ELISA: 1/10000. Not yet tested in other applications. |
| Concentration | 1 mg/ml |
| Purity | ≥90% |
| Storage Stability | -20°C/1 year |
| Synonyms | KLHL13; BKLHD2; KIAA1309; Kelch-like protein 13; BTB and kelch domain-containing protein 2 |
| Observed Band | |
| Cell Pathway | midbody,Cul3-RING ubiquitin ligase complex, |
| Tissue Specificity | Brain,Testis,Thalamus,Whole embryo, |
| Function | function:Substrate-specific adapter for a CUL3-based E3 ubiquitin-protein ligase complex. Within this complex, controls the dynamic behavior of AURKB on mitotic chromosomes and thereby coordinates faithful mitotic progression and completion of cytokinesis.,pathway:Protein modification; protein ubiquitination.,similarity:Contains 1 BACK (BTB/Kelch associated) domain.,similarity:Contains 1 BTB (POZ) domain.,similarity:Contains 6 Kelch repeats.,subunit:Forms a complex with CUL3 and KLHL9. Interacts with AURKB. Interacts with CUL3., |
| Background | This gene encodes a BTB and kelch domain containing protein and belongs to the kelch repeat domain containing superfamily of proteins. The encoded protein functions as an adaptor protein that complexes with Cullin 3 and other proteins to form the Cullin 3-based E3 ubiquitin-protein ligase complex. This complex is necessary for proper chromosome segregation and completion of cytokinesis. Alternate splicing results in multiple transcript variants. [provided by RefSeq, Mar |



2010],

matters needing attention

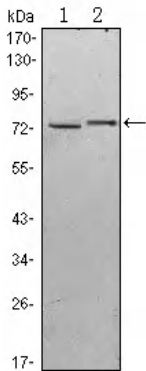
Avoid repeated freezing and thawing!

Usage suggestions

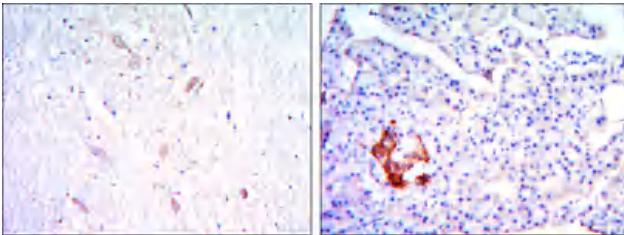
This product can be used in immunological reaction related experiments. For more information, please consult technical personnel.



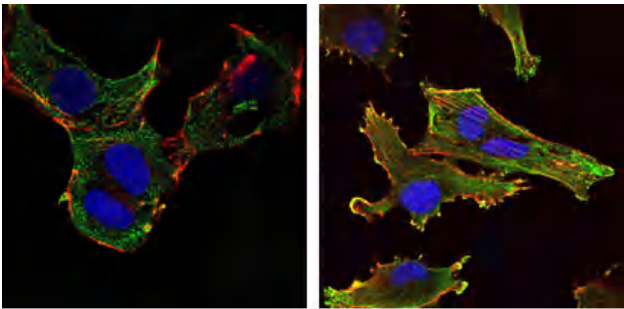
Products Images



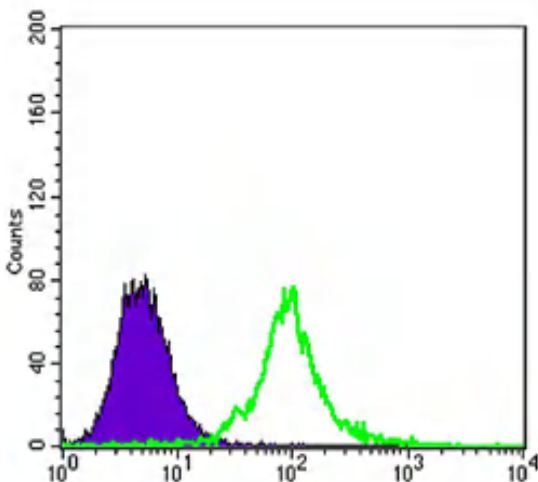
Western Blot analysis using KLHL13 Monoclonal Antibody against HeLa (1) and MCF-7 (2) cell lysate.



Immunohistochemistry analysis of paraffin-embedded brain tissues (left) and pancreas tissues (right) with DAB staining using KLHL13 Monoclonal Antibody.



Immunofluorescence analysis of NTERA-2 cells (left) and U251 (right) cells using KLHL13 Monoclonal Antibody (green). Blue: DRAQ5 fluorescent DNA dye. Red: Actin filaments have been labeled with Alexa Fluor-555 phalloidin.



Flow cytometric analysis of 3T3/L1 cells using KLHL13 Monoclonal Antibody (green) and negative control (purple).